

42029 Customized Pick Up Truck

Remote Controlled MOC Instructions

By Alexis Vilvert

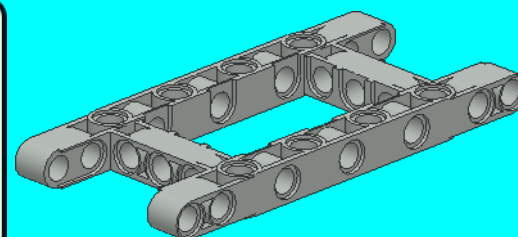
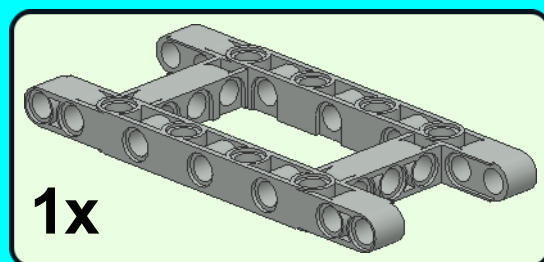
<http://lego.vilvert.fr>



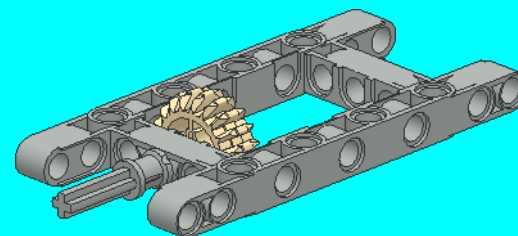
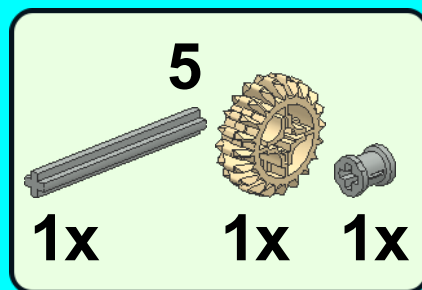
To build that model,
you will need the two
original insruction
booklets.

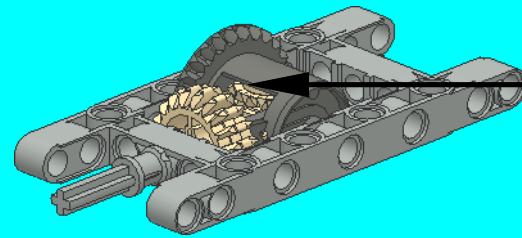


1

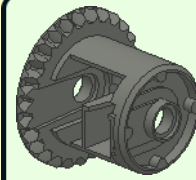


2

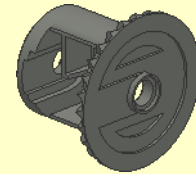




1



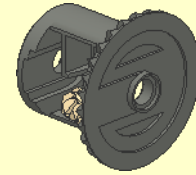
1x



2



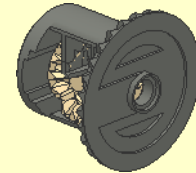
1x

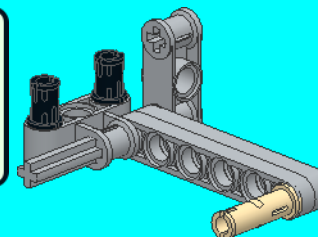
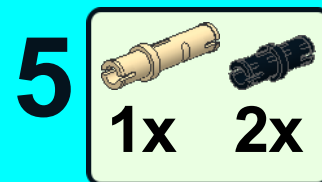
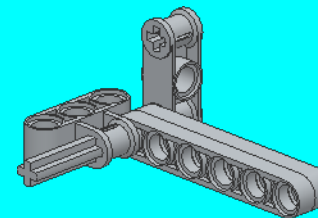
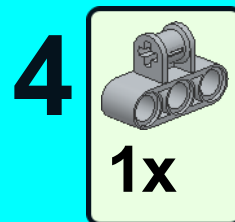
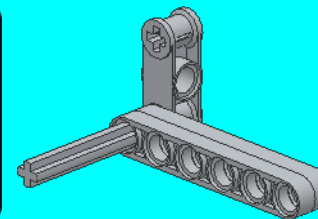
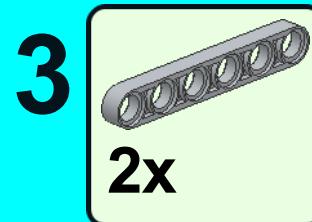
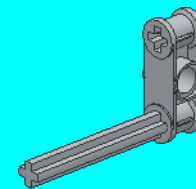
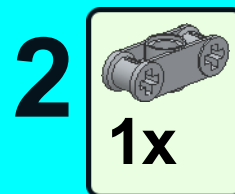
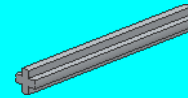
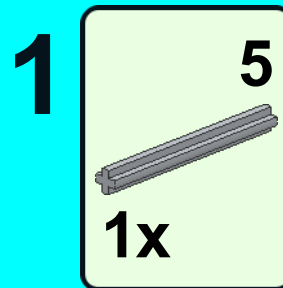


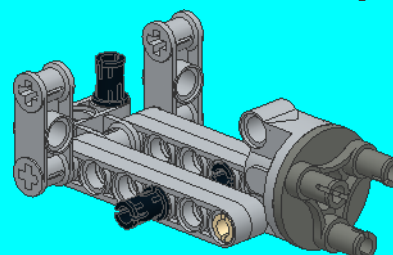
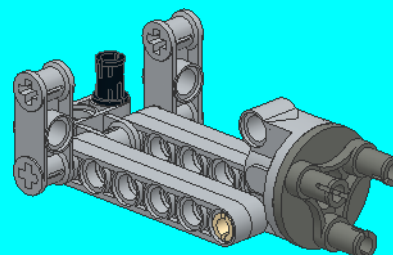
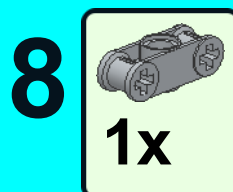
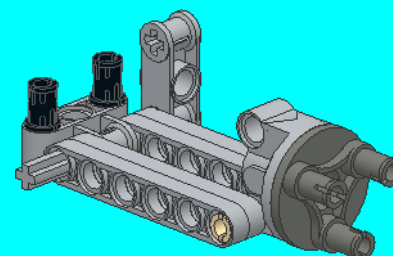
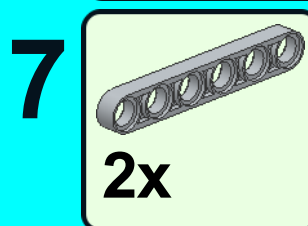
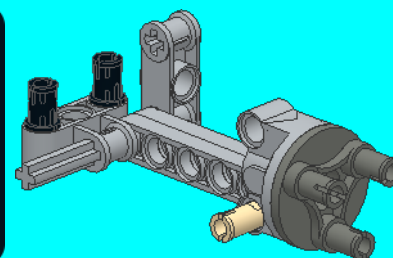
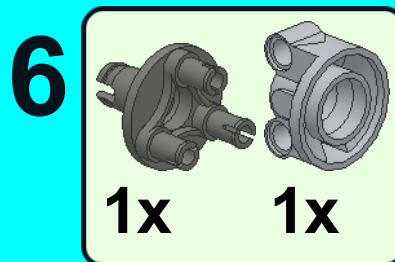
3



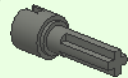
2x



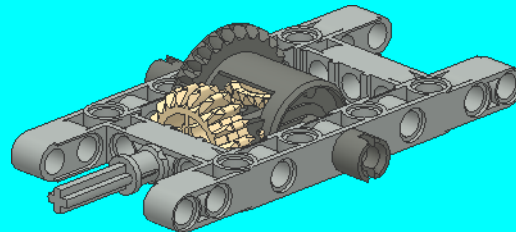




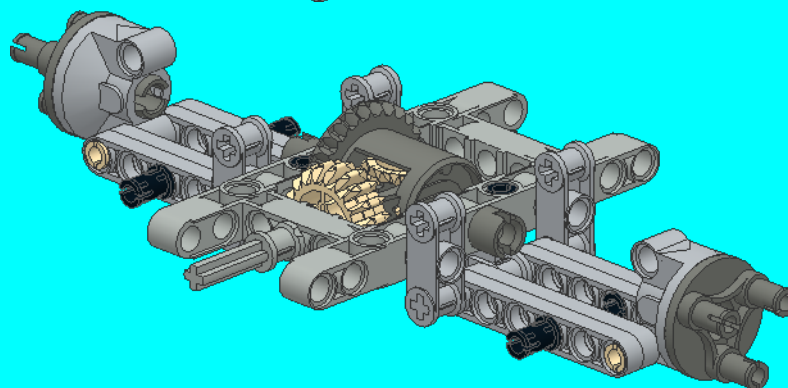
4



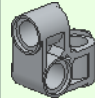
2x



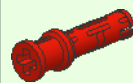
5



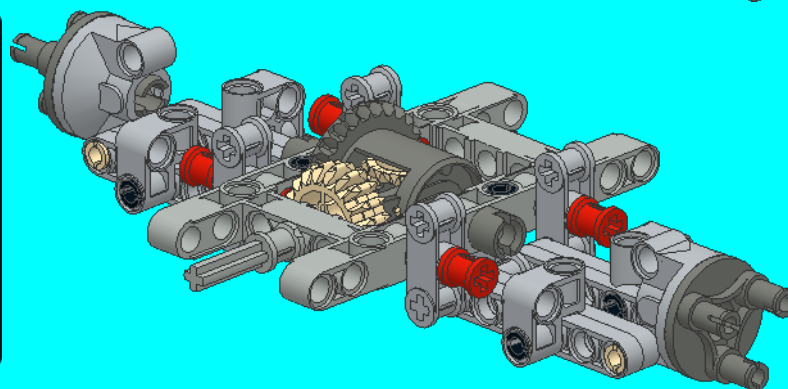
6

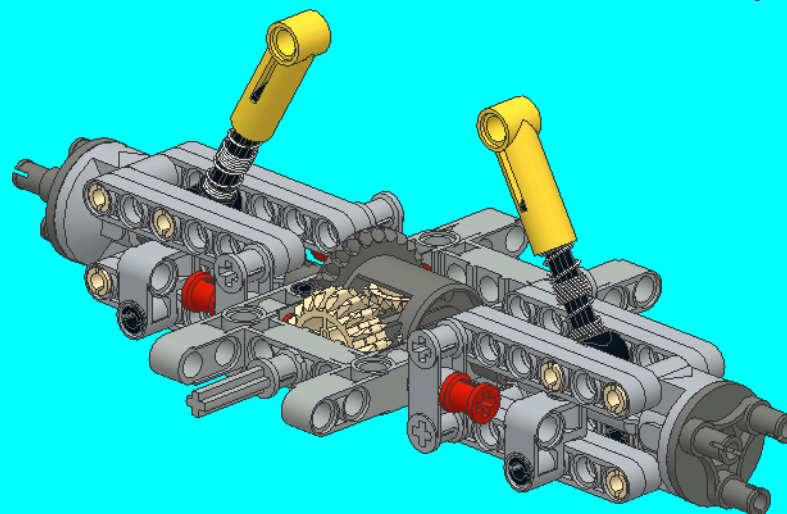
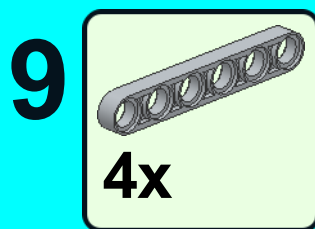
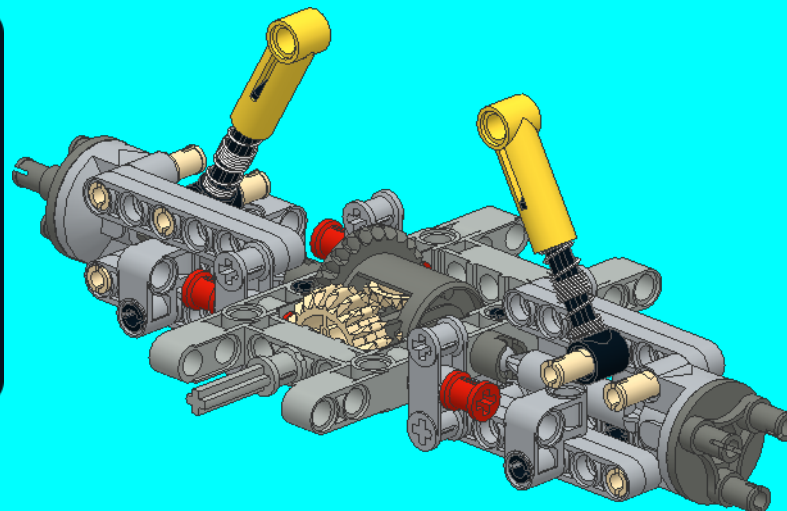
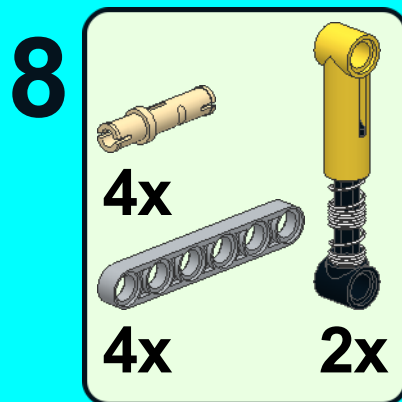
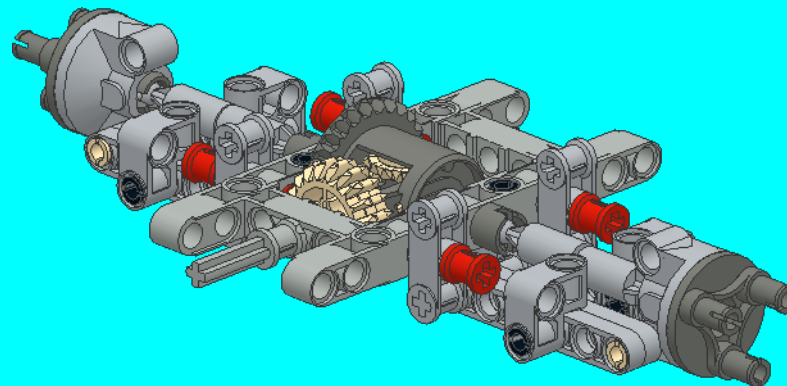
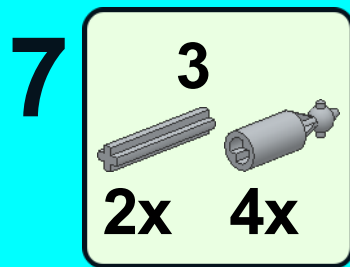


4x

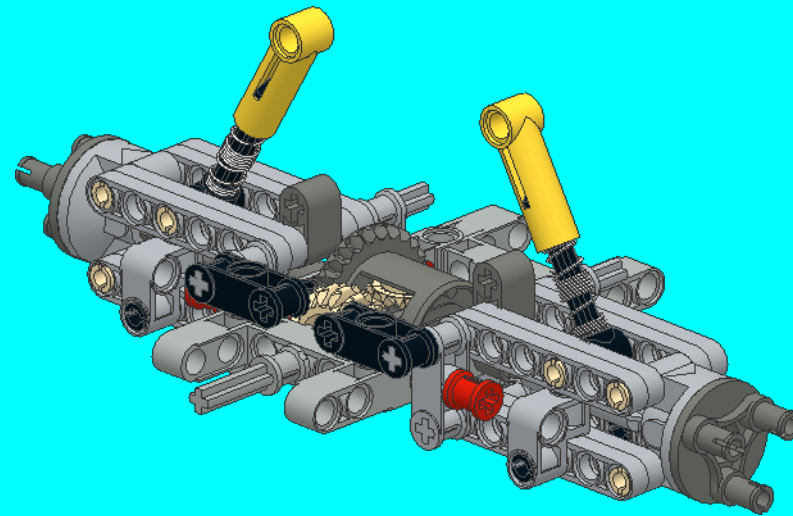
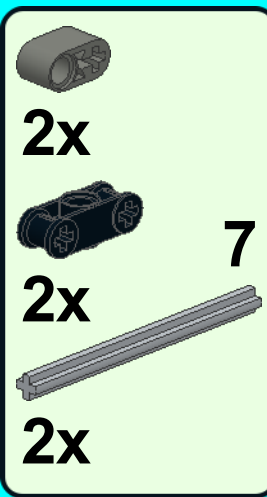


4x

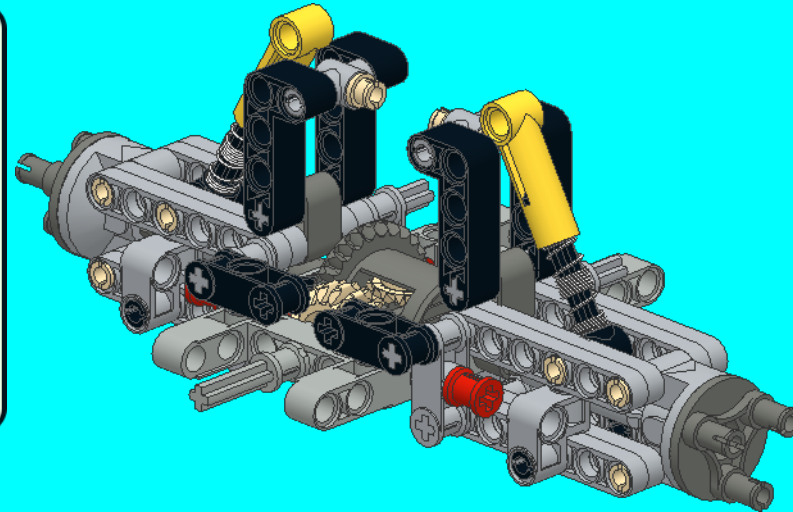
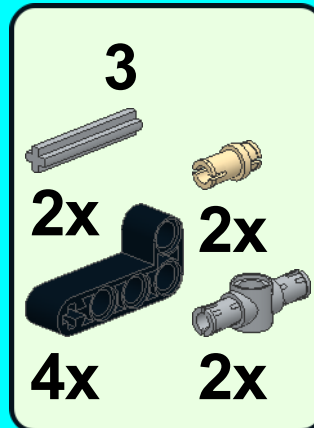




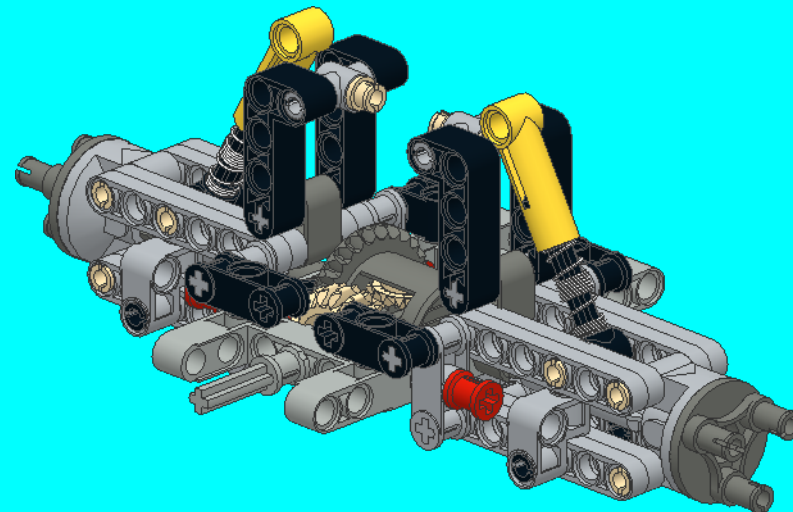
10



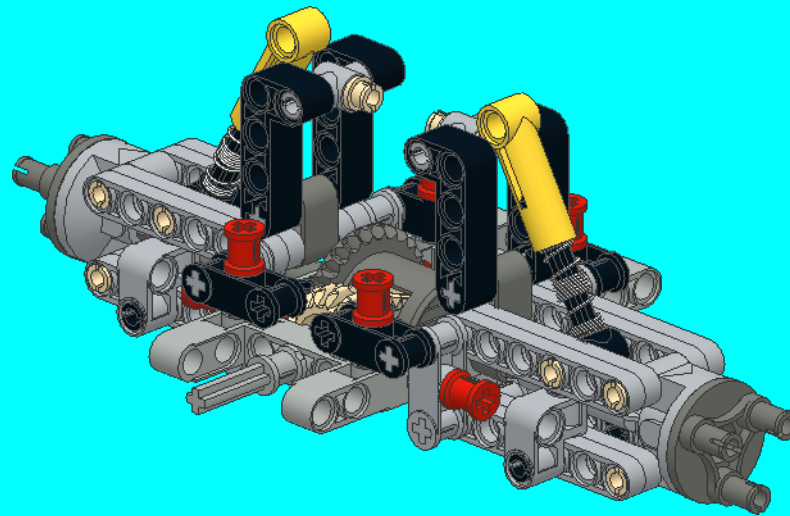
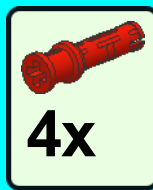
11



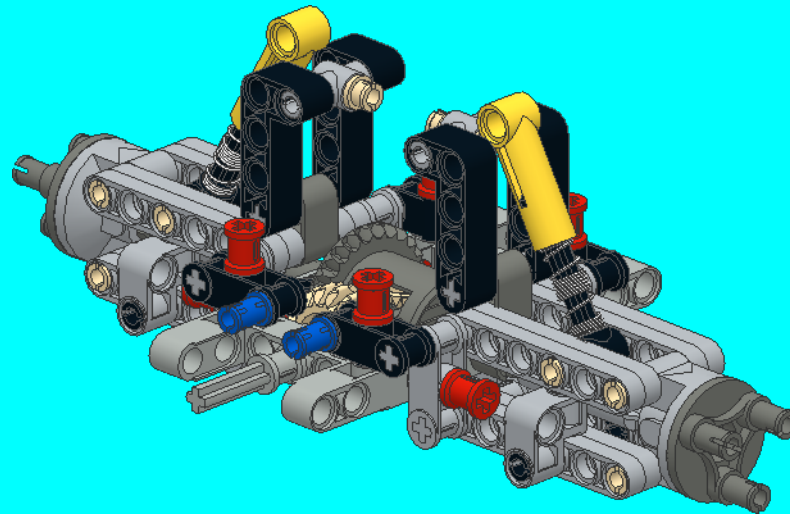
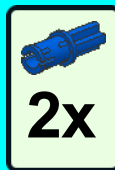
12



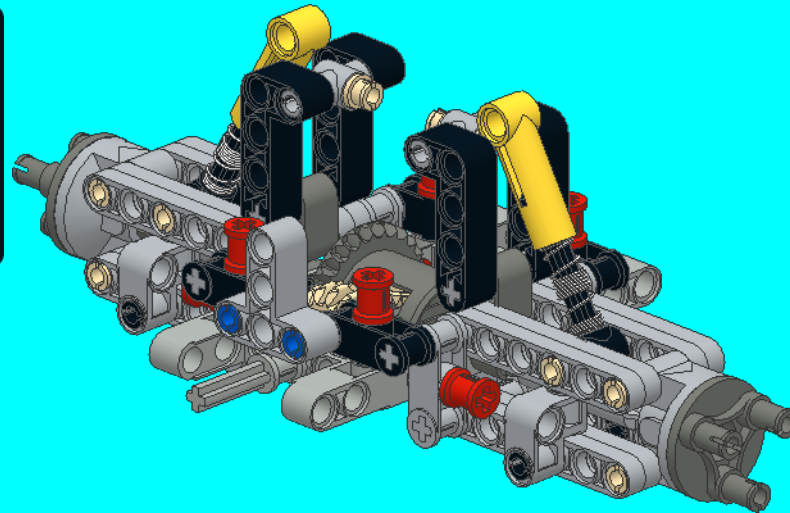
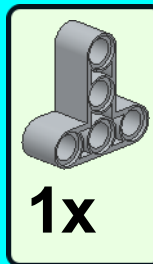
13



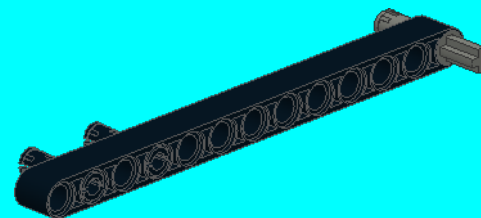
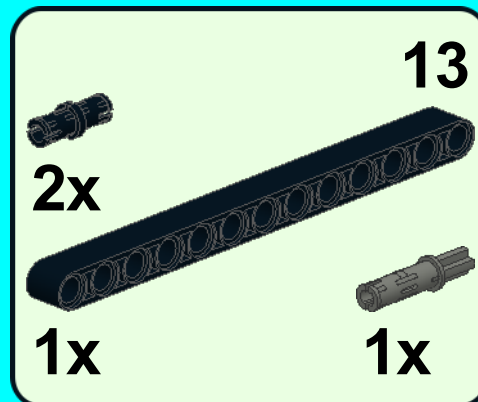
14



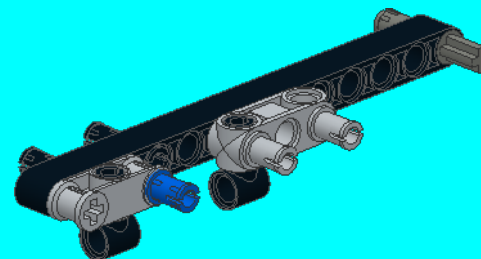
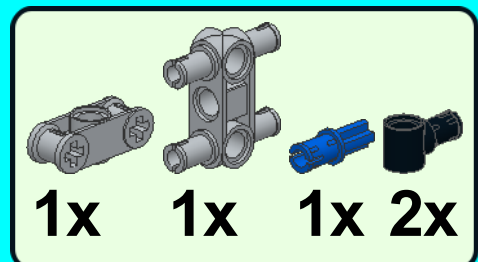
15



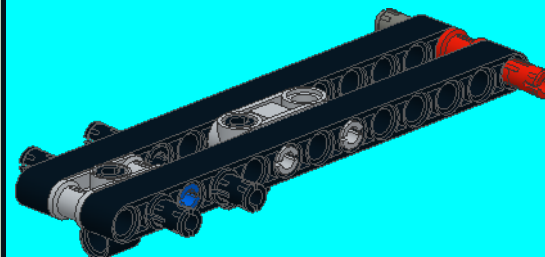
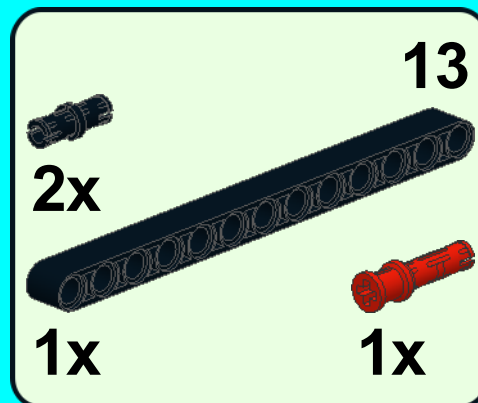
1



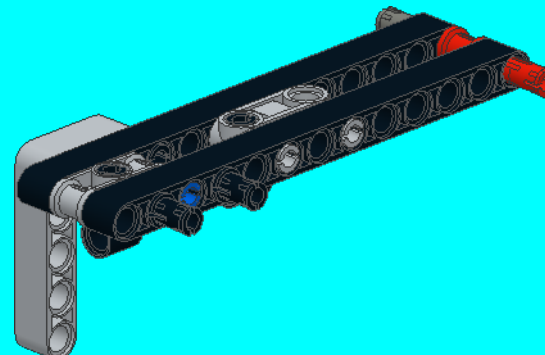
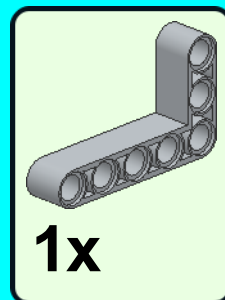
2



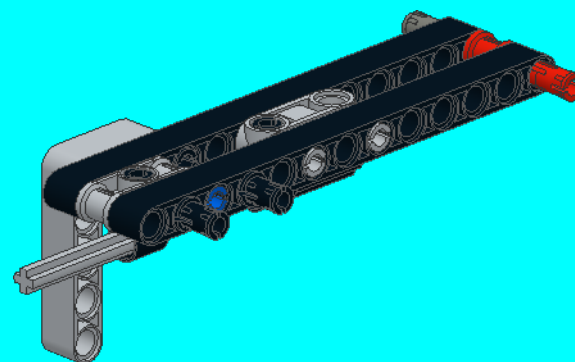
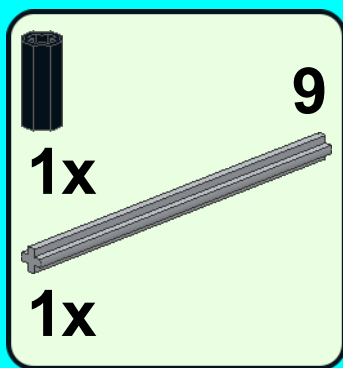
3



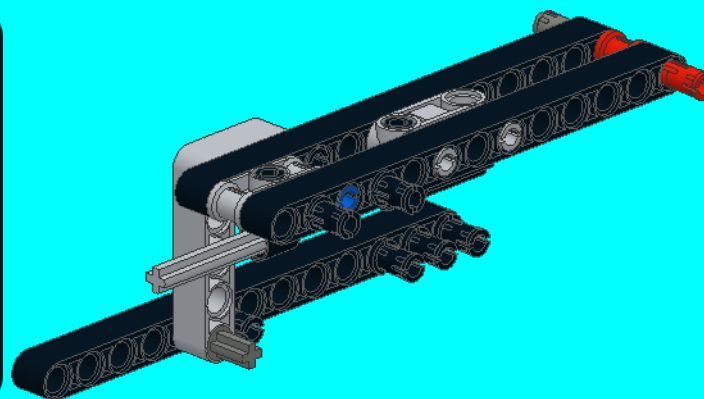
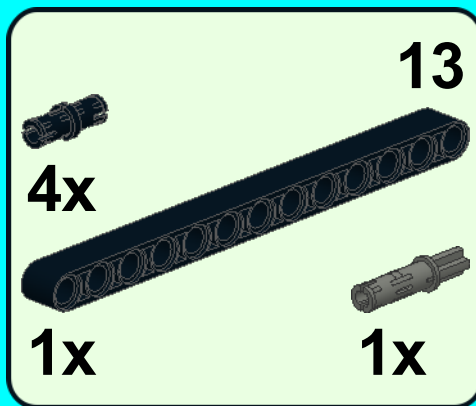
4



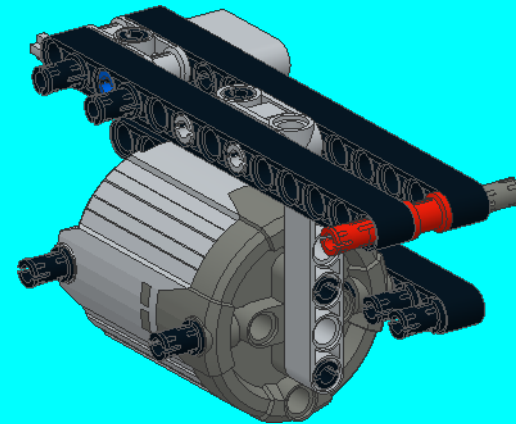
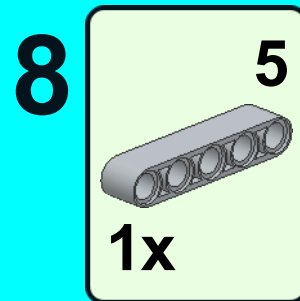
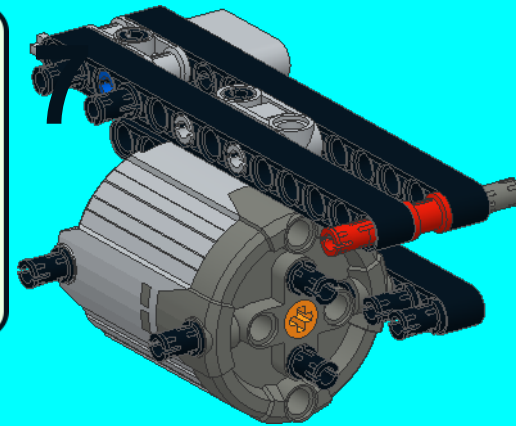
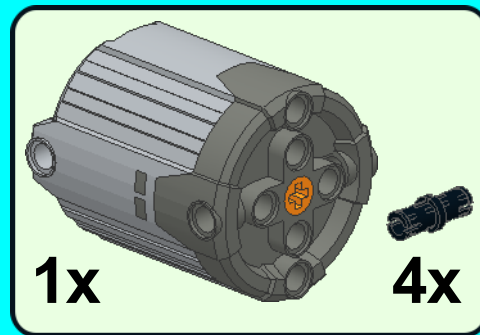
5



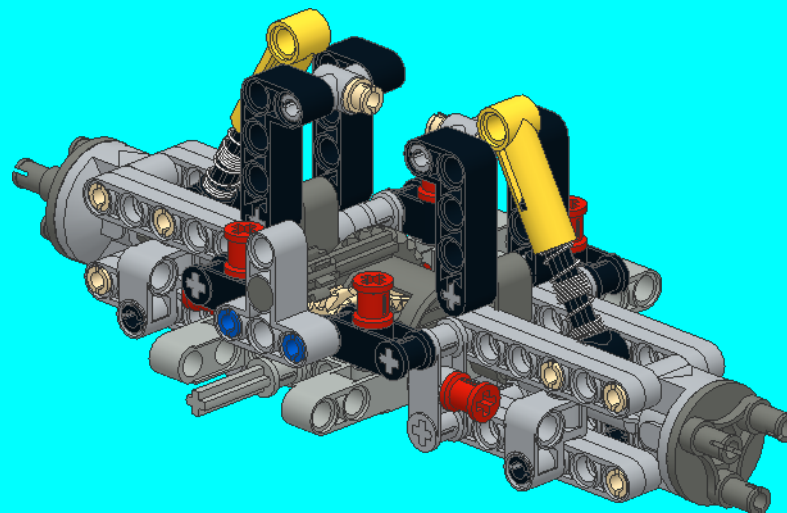
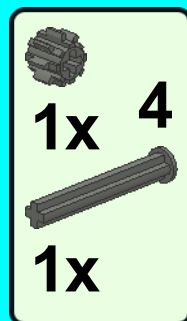
6



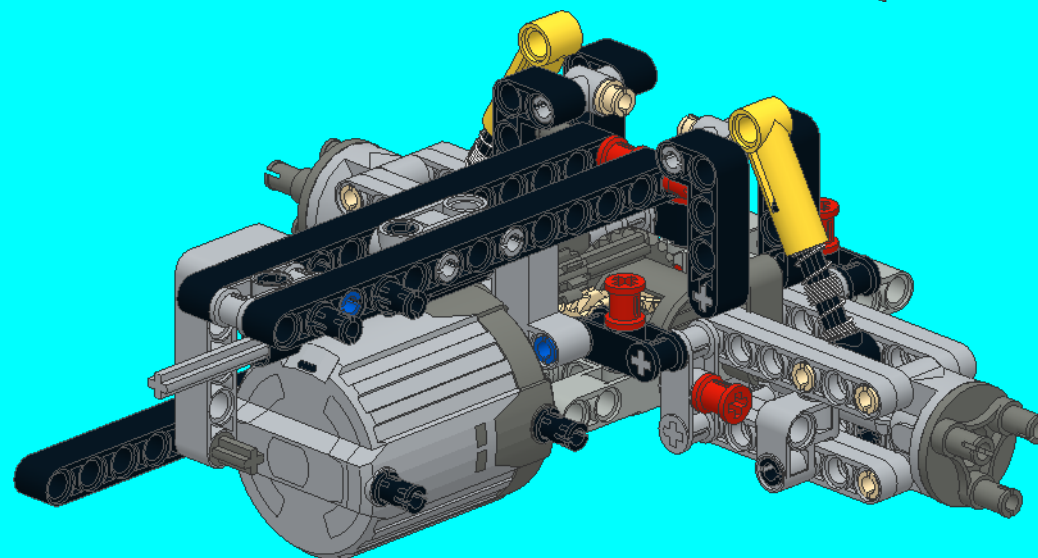
7

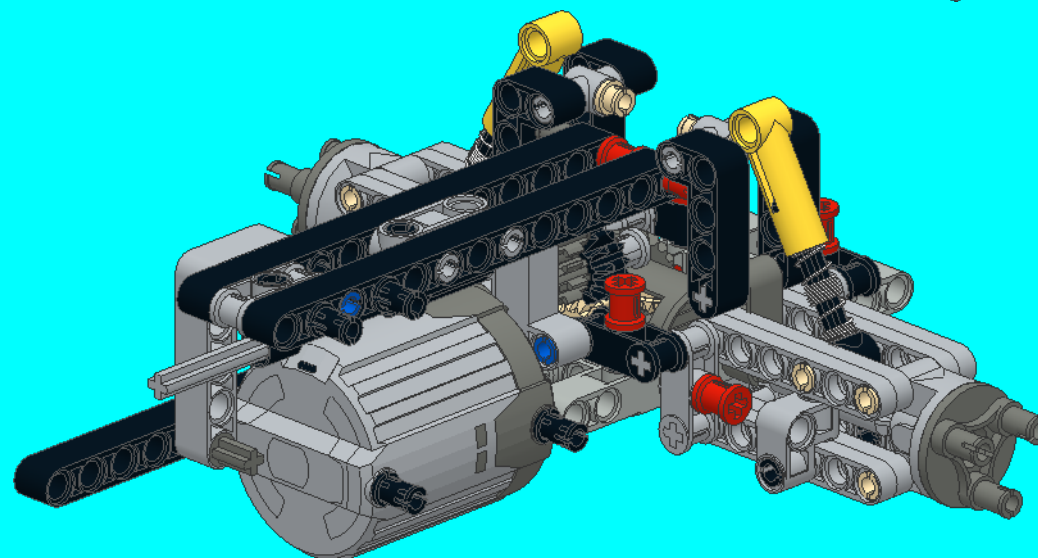
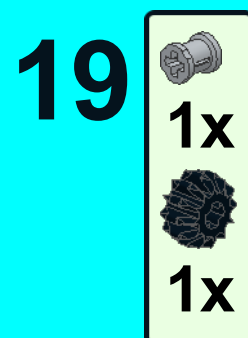
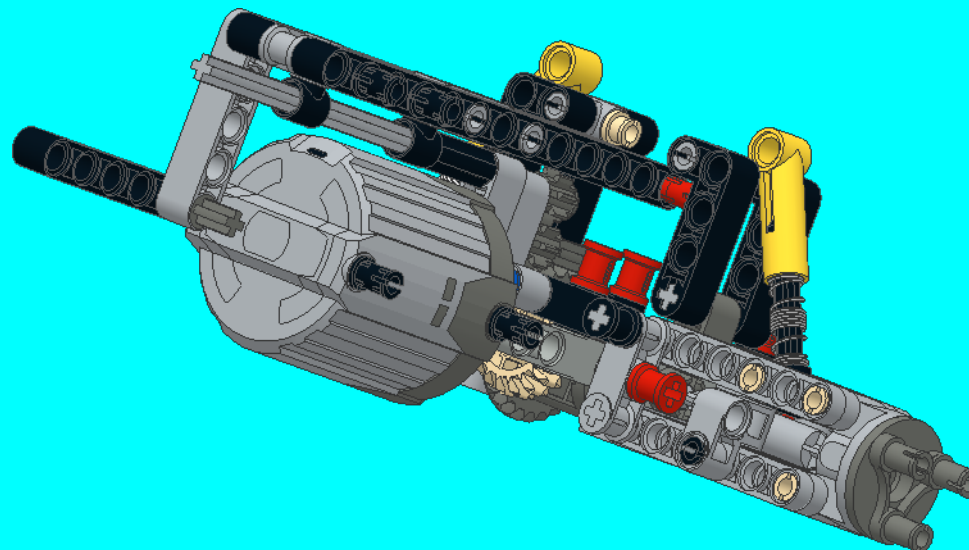
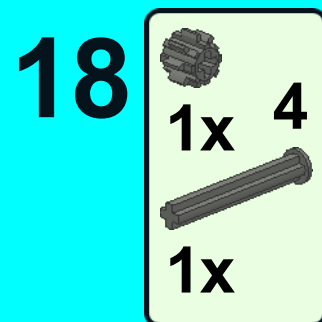


16



17





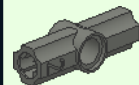
20



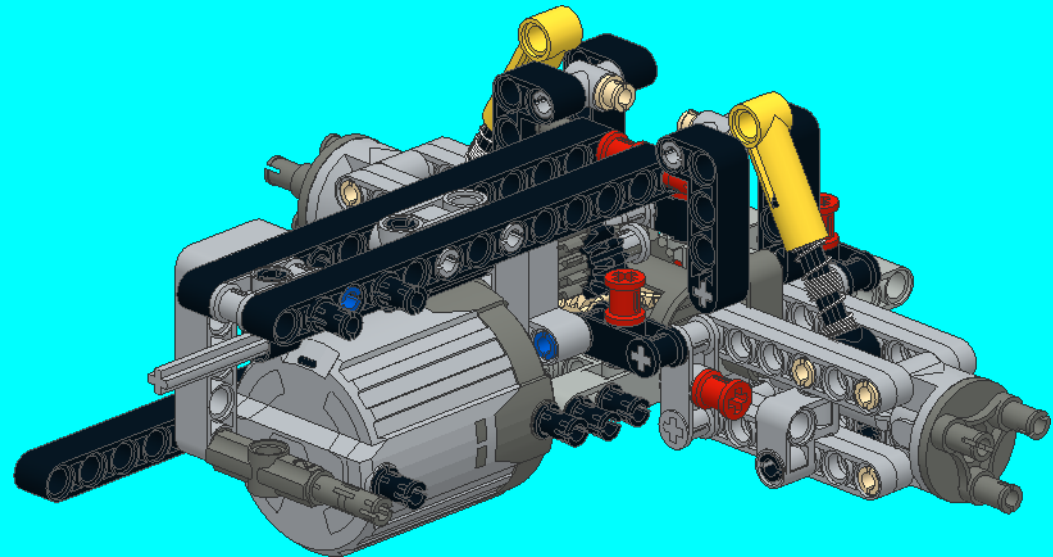
2x



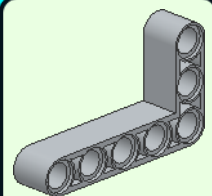
1x



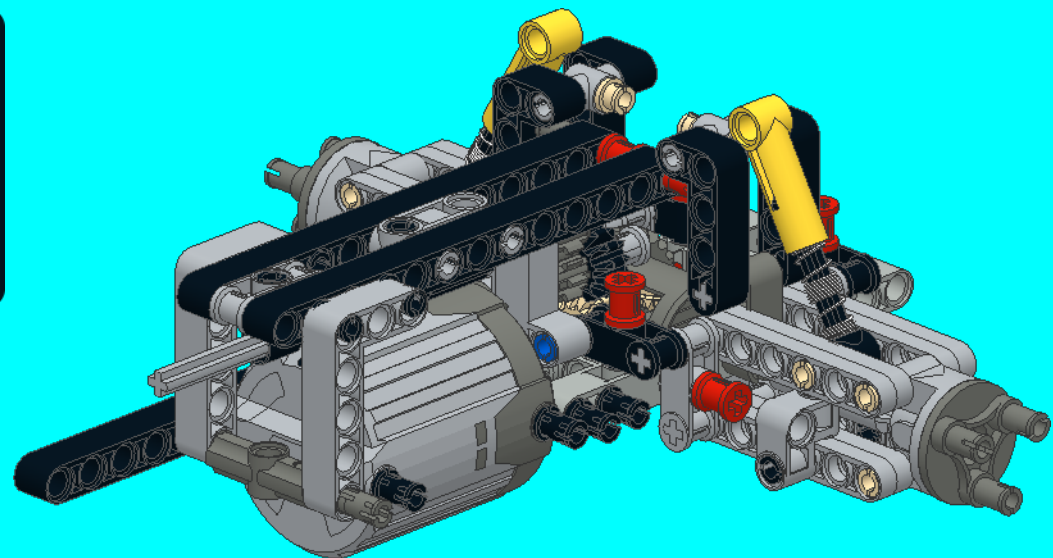
1x



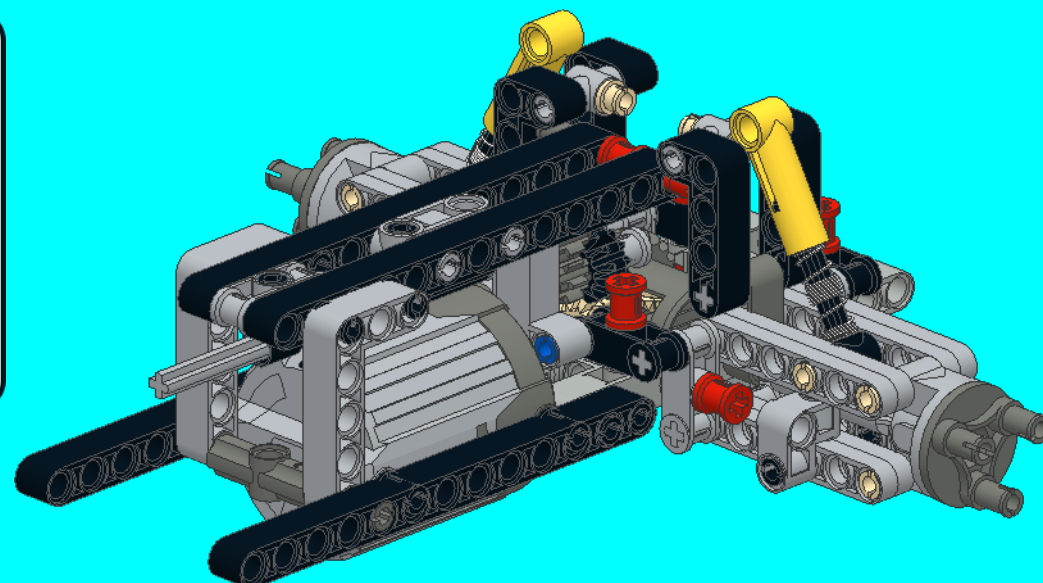
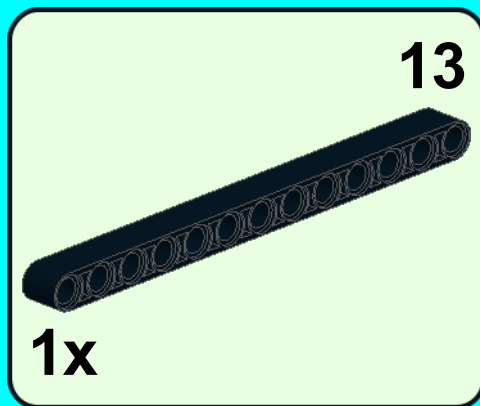
21



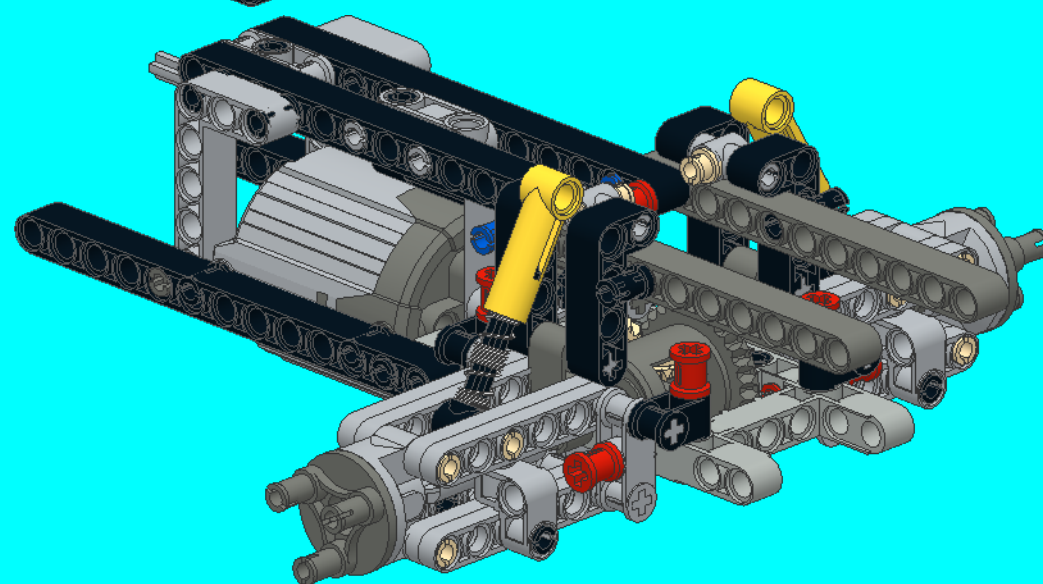
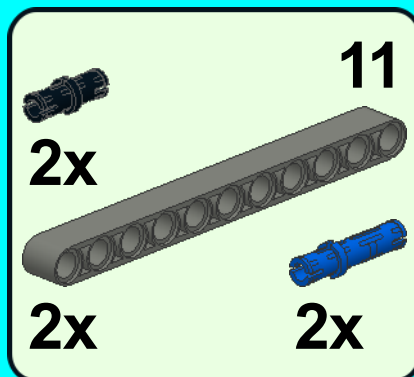
1x



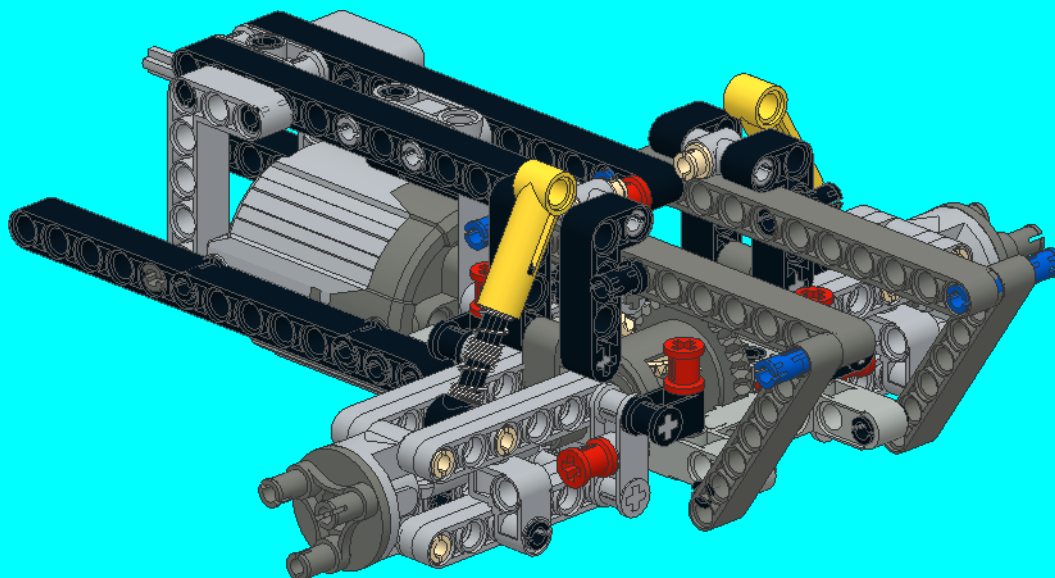
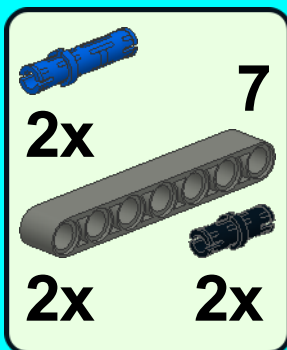
22



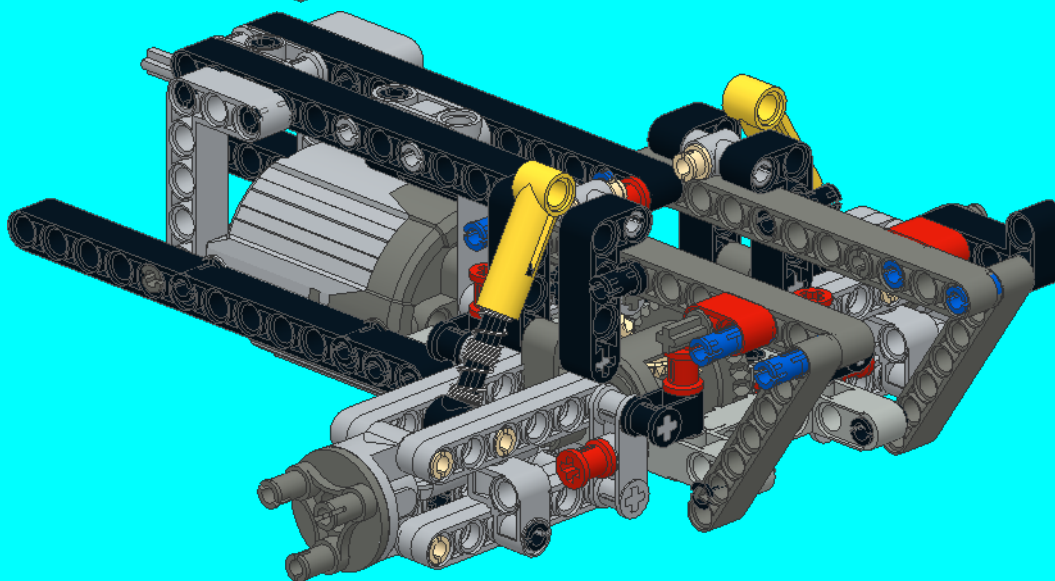
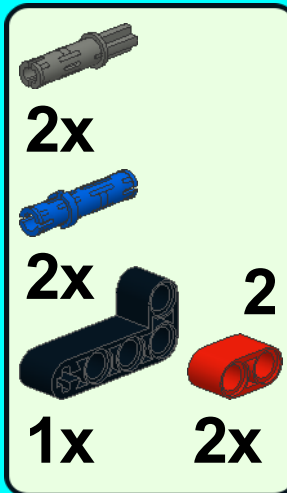
23

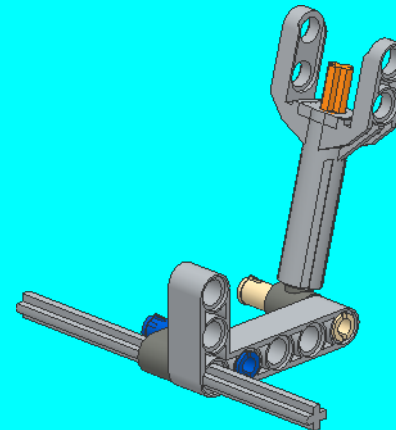
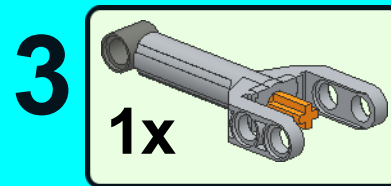
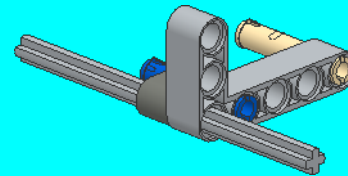
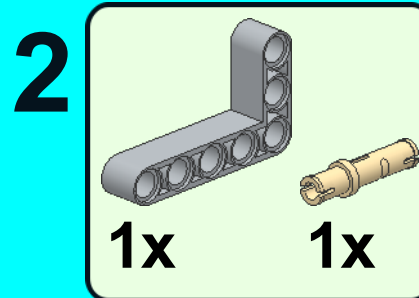
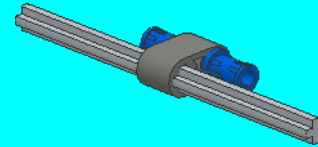
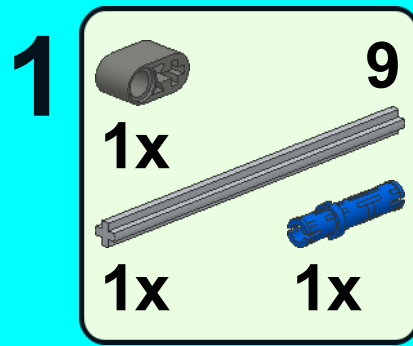


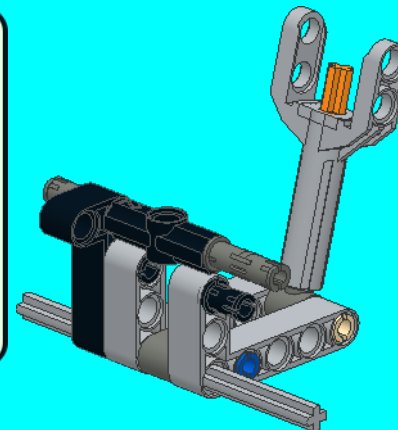
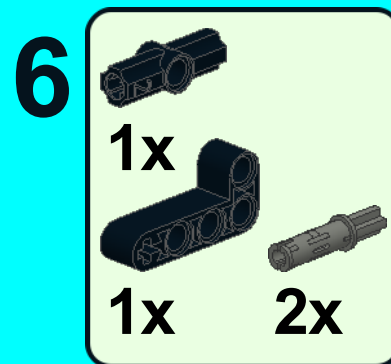
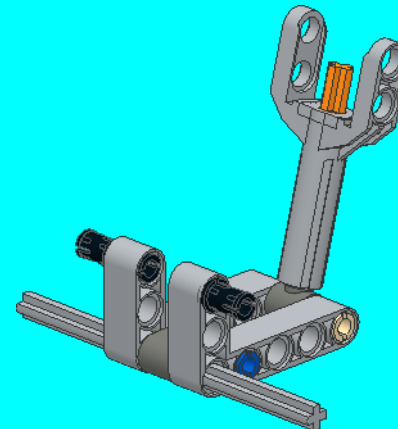
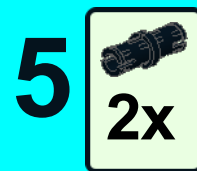
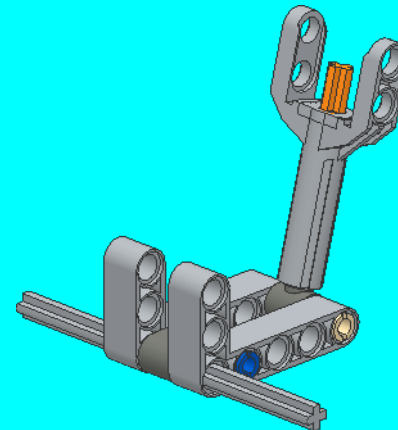
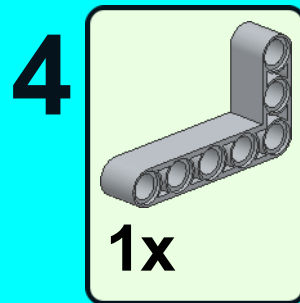
24




25



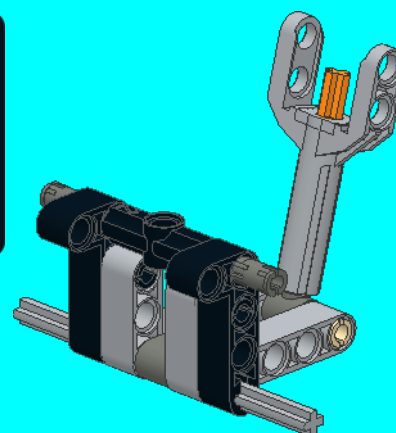




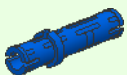
7




1x



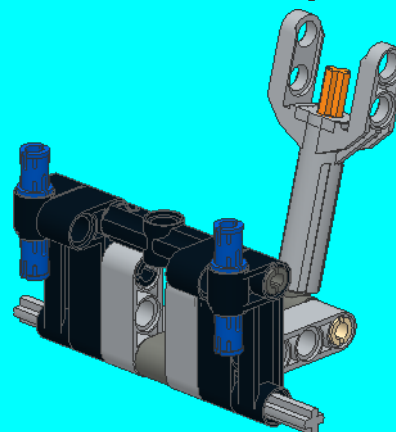
8



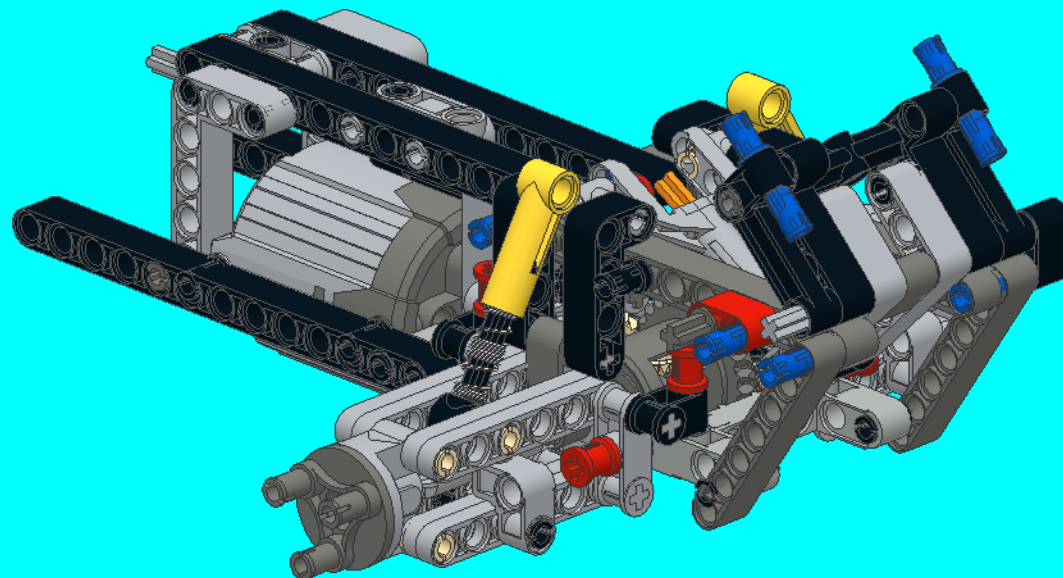
2x



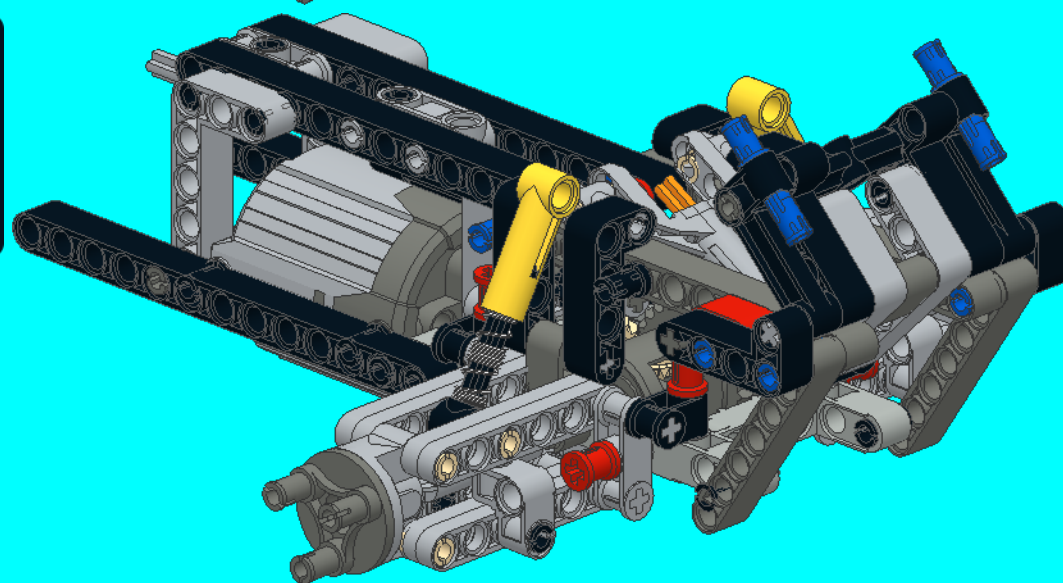
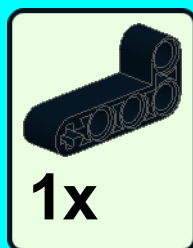
2x



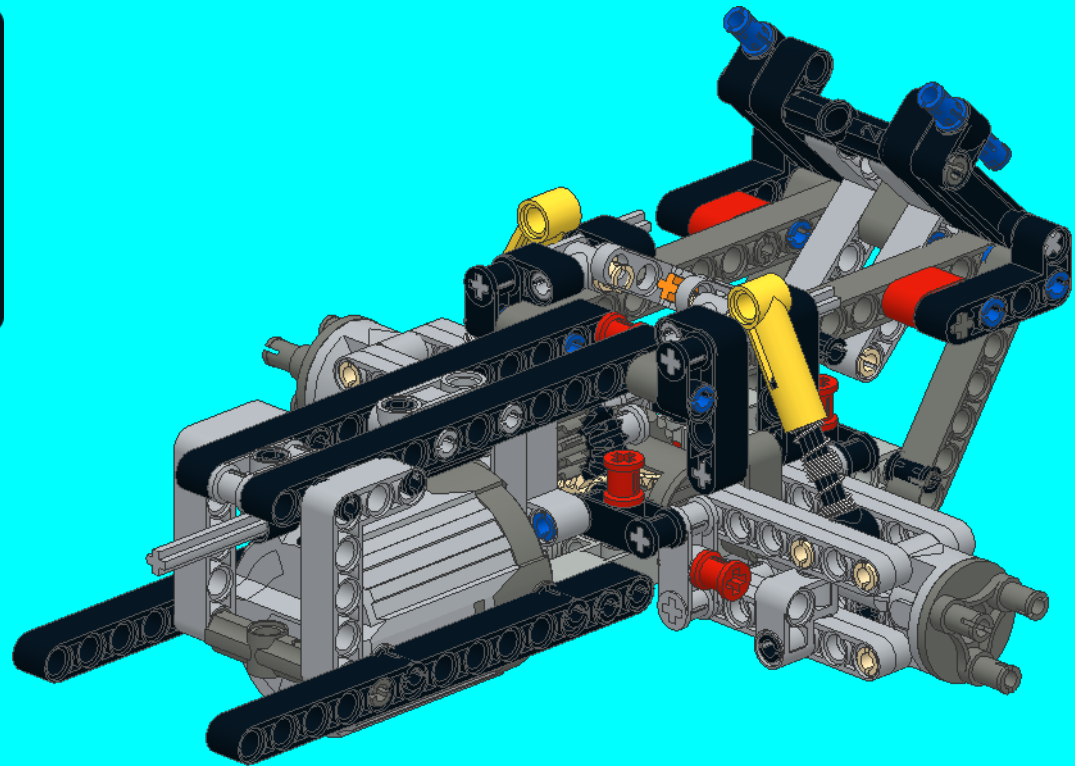
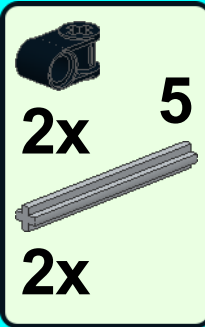
26



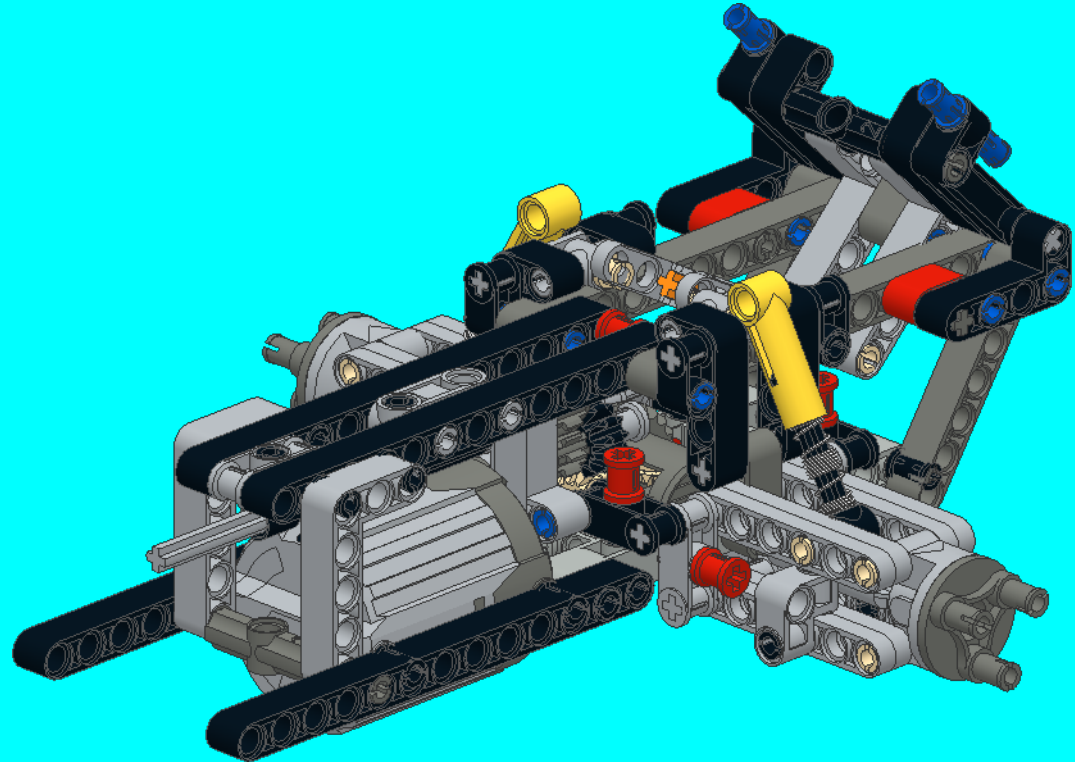
27



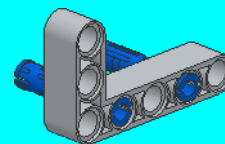
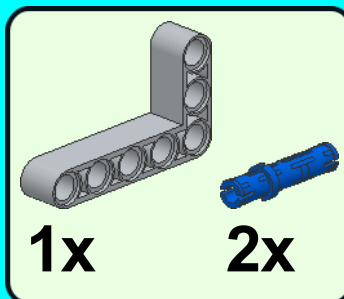
28



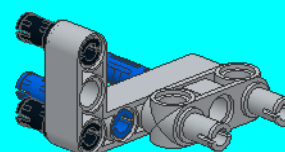
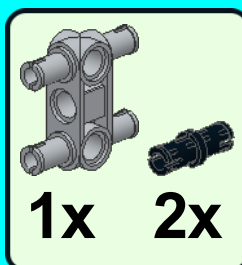
29



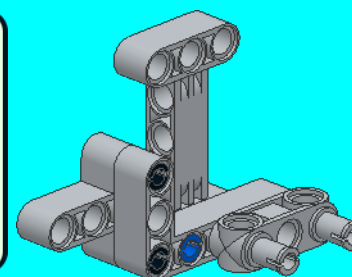
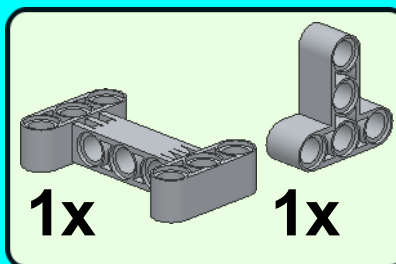
1



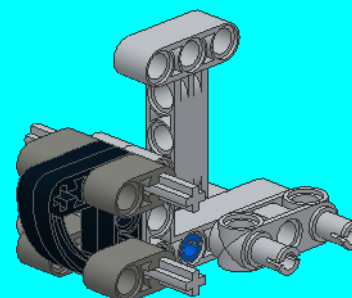
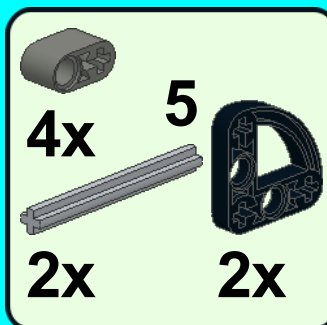
2

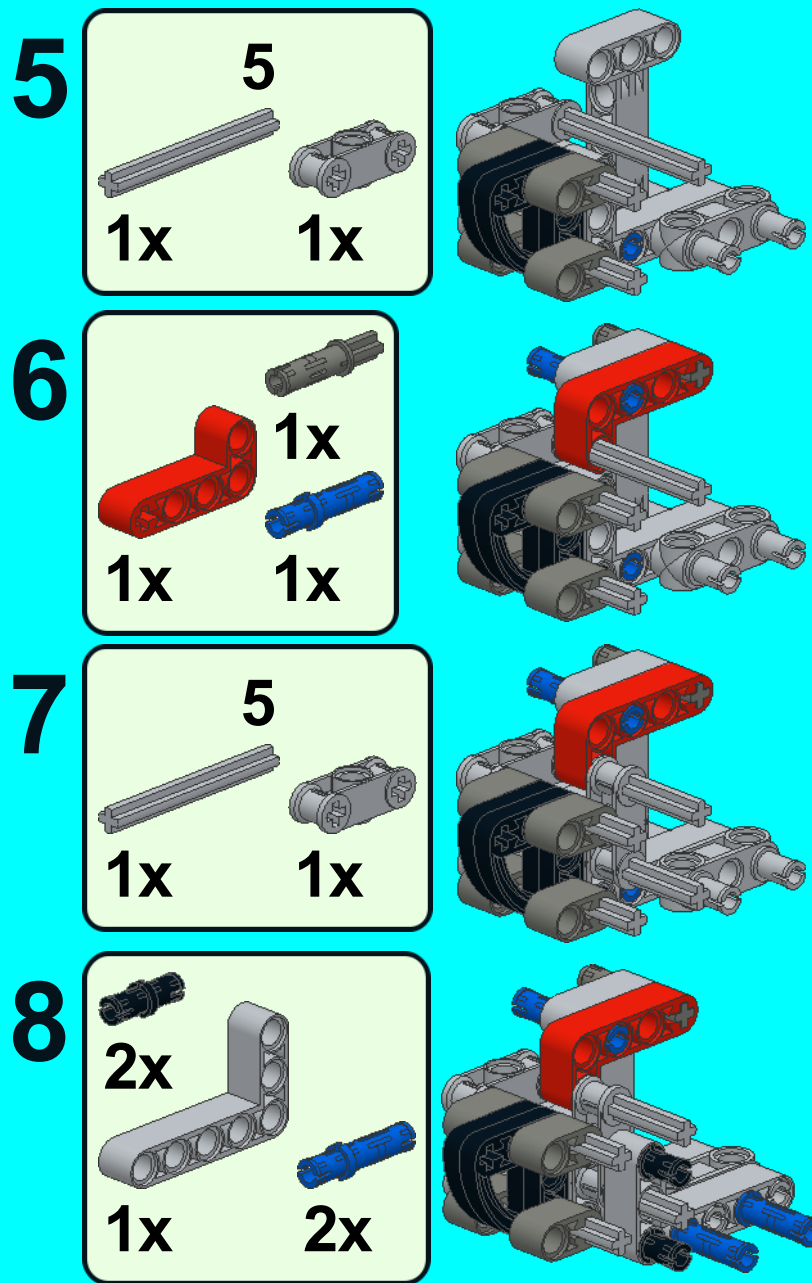


3

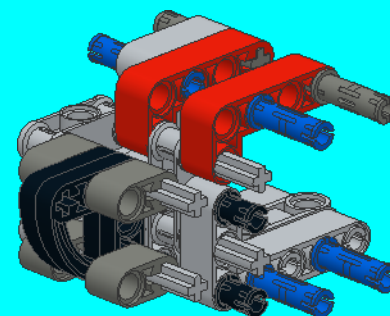
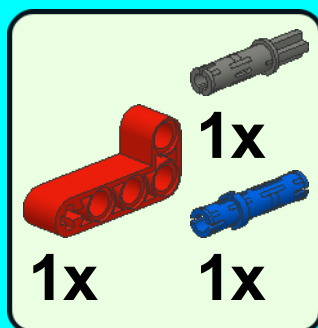


4

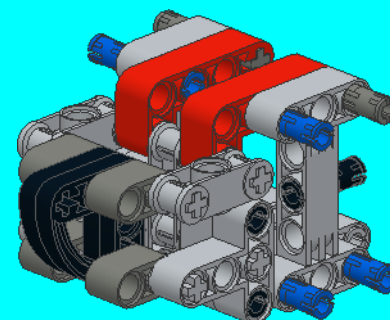
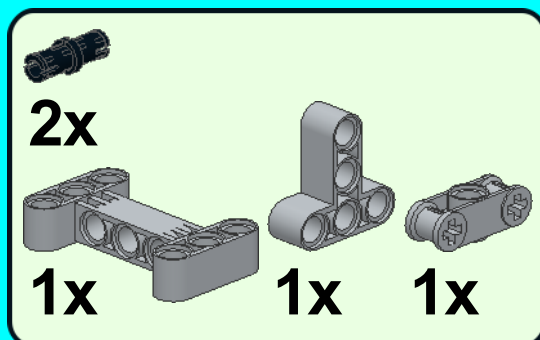




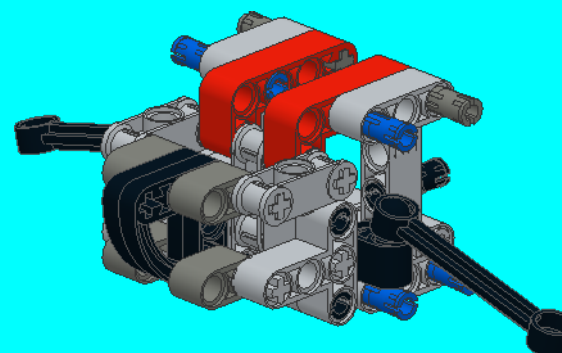
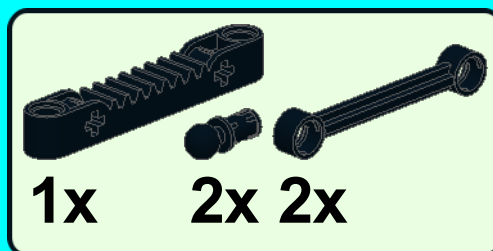
9



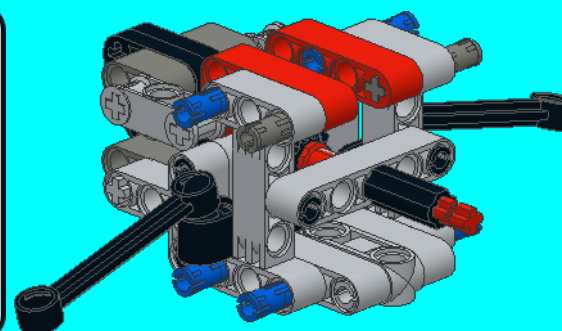
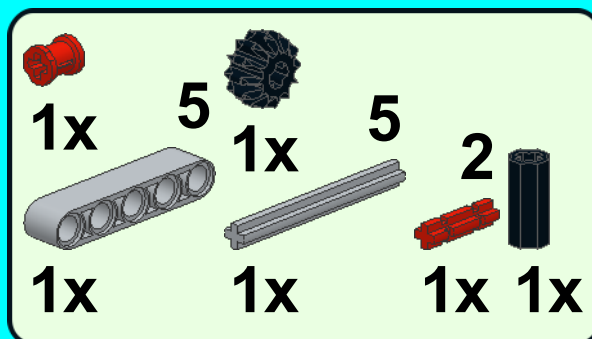
10



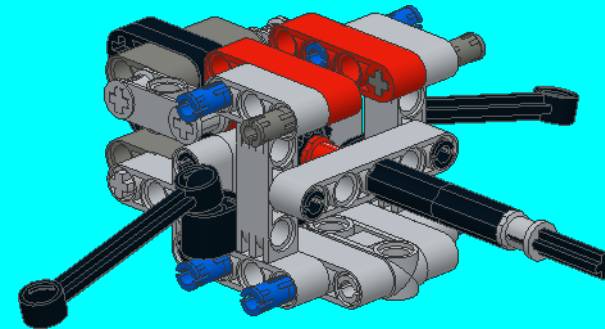
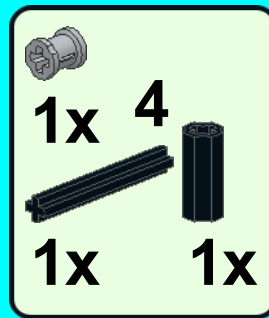
11



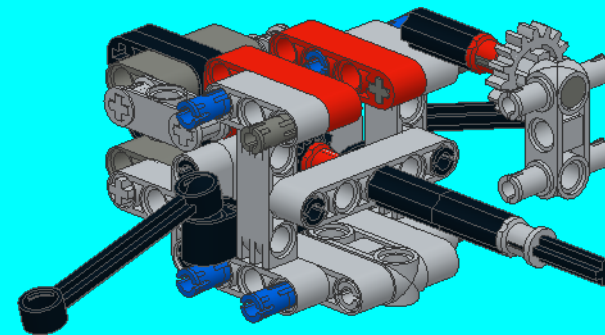
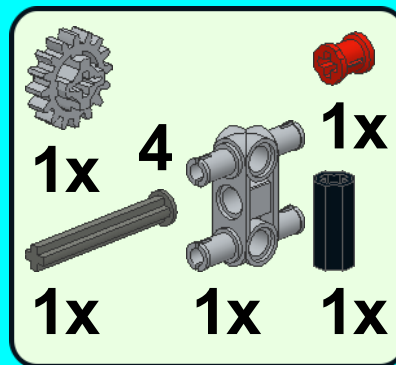
12



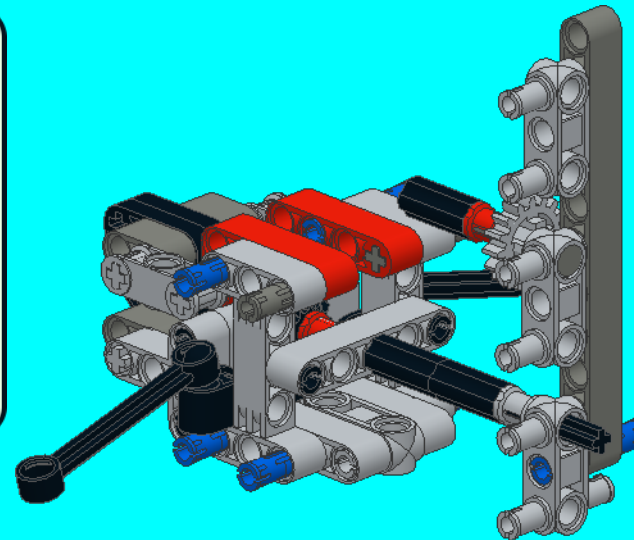
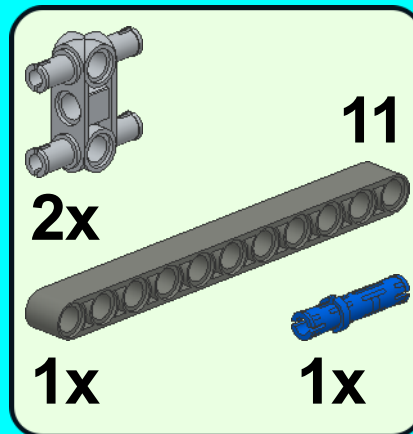
13



14



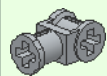
15



16

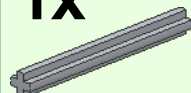


1x

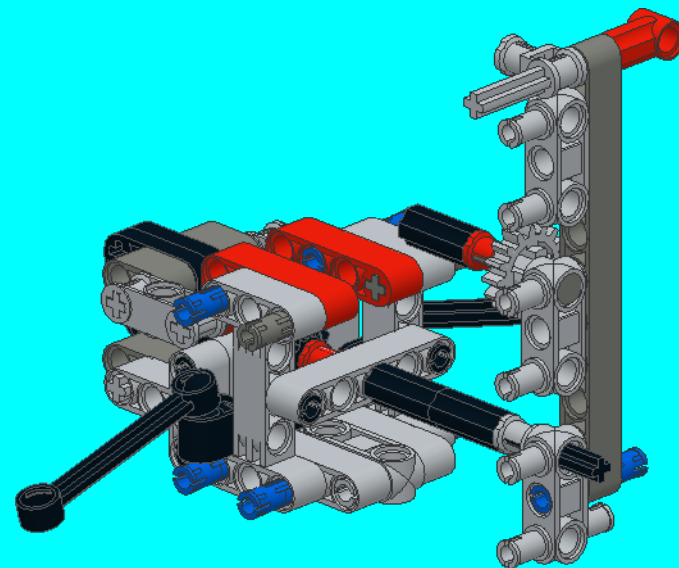


1x

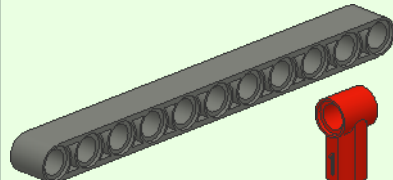
5



1x



17

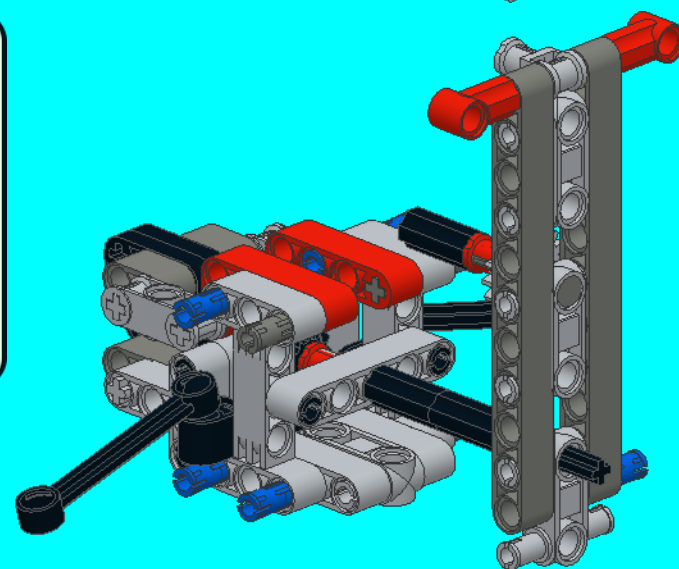


1x

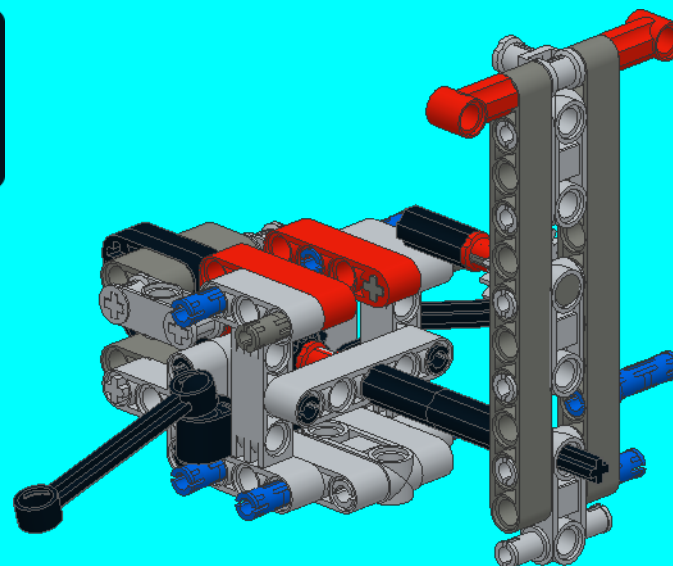
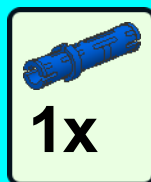
11



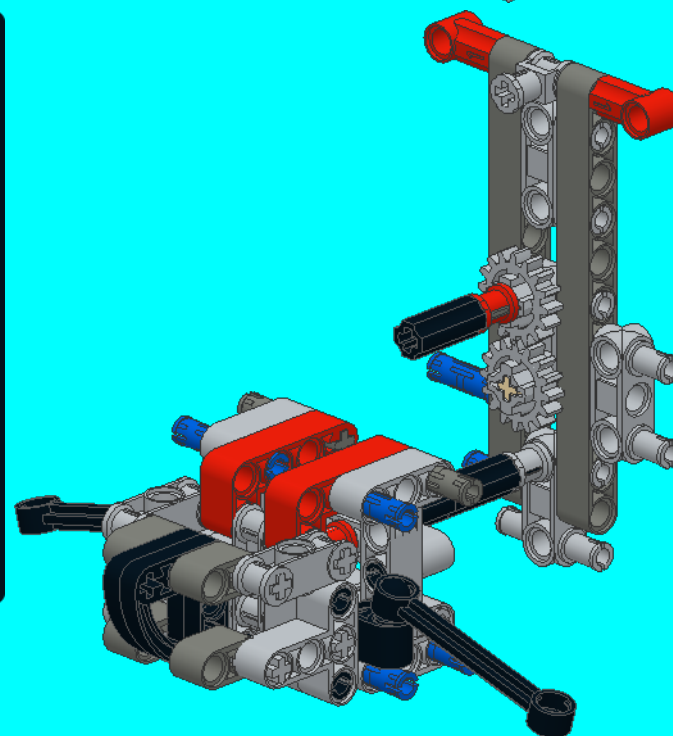
1x



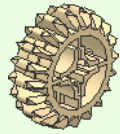
18



19

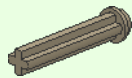


20

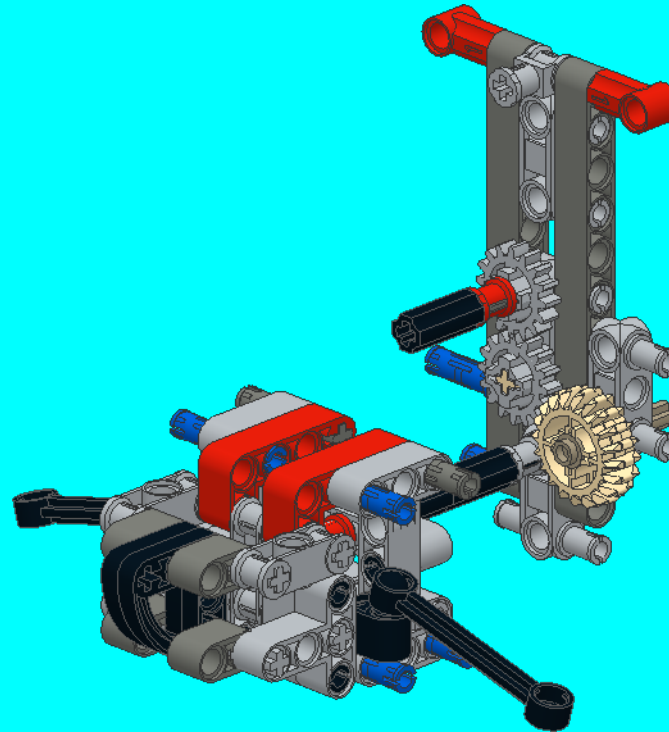


1x

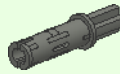
3



1x



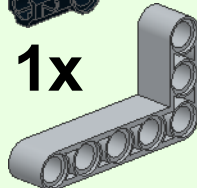
21



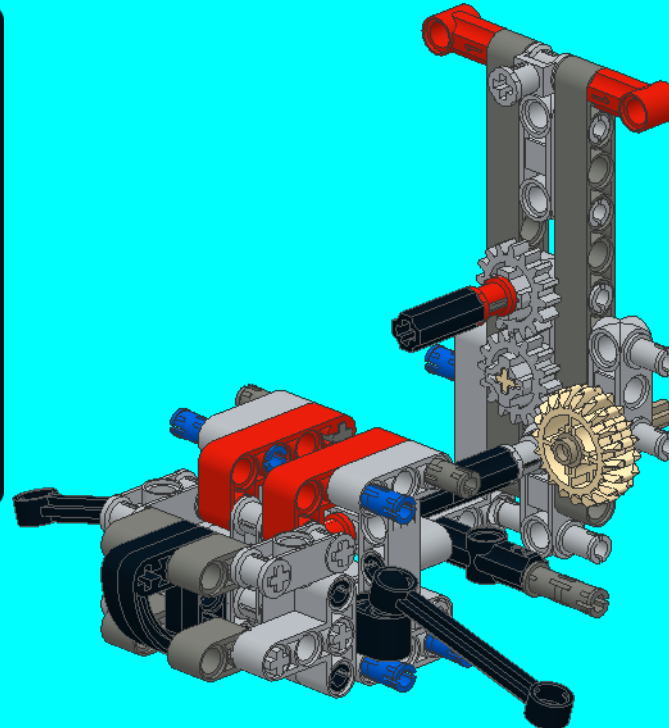
2x



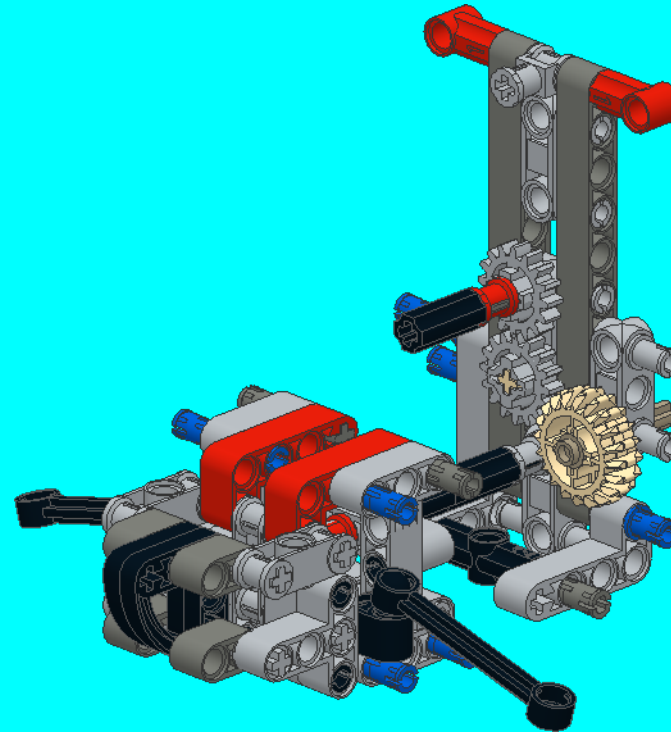
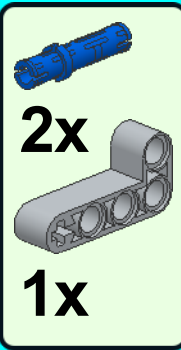
1x



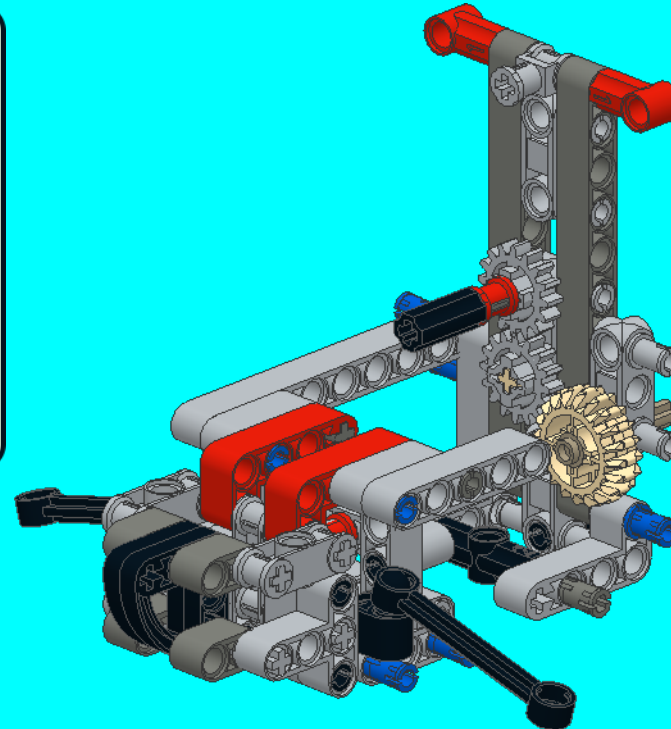
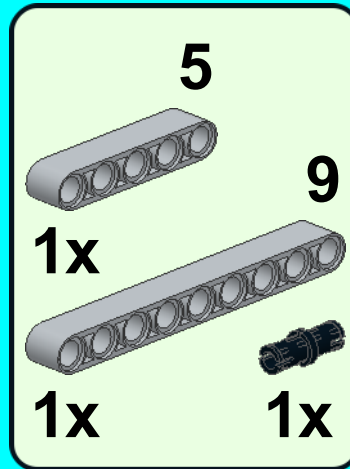
1x



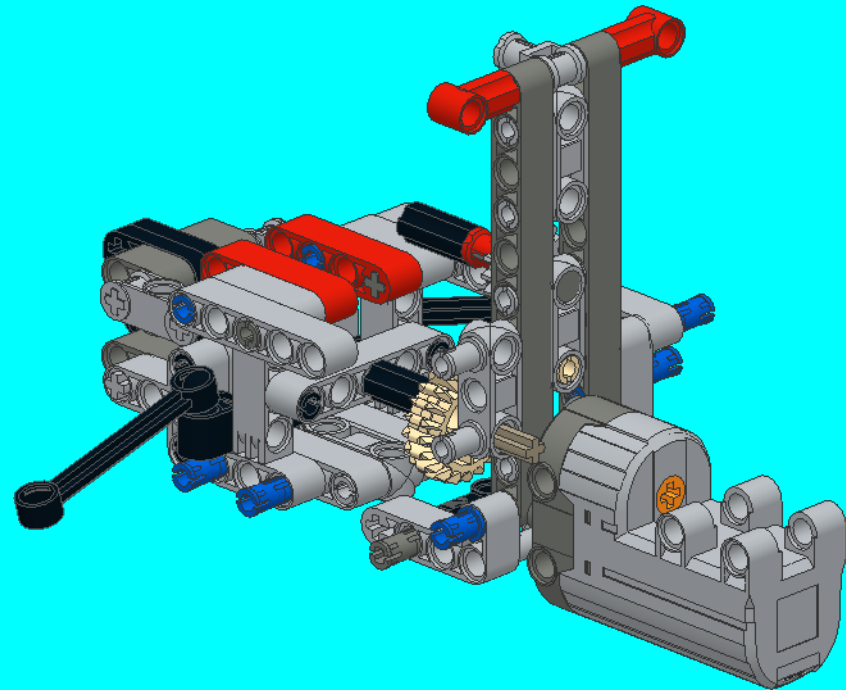
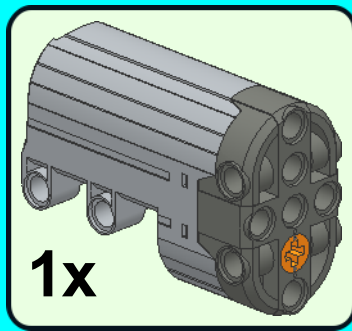
22



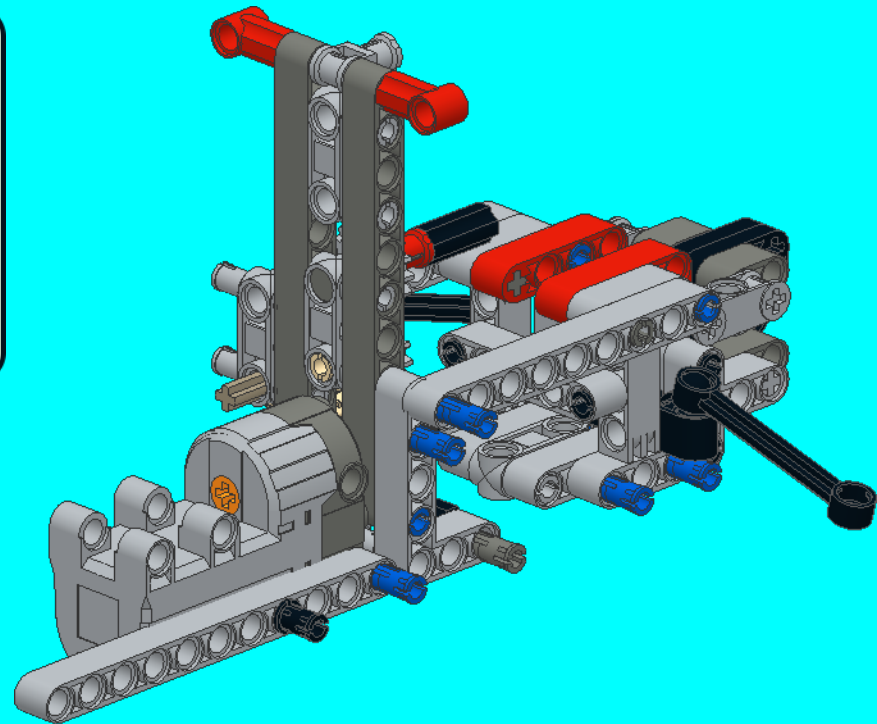
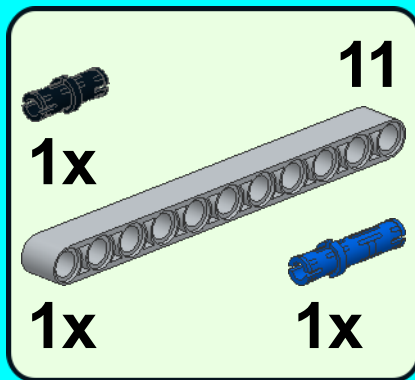
23



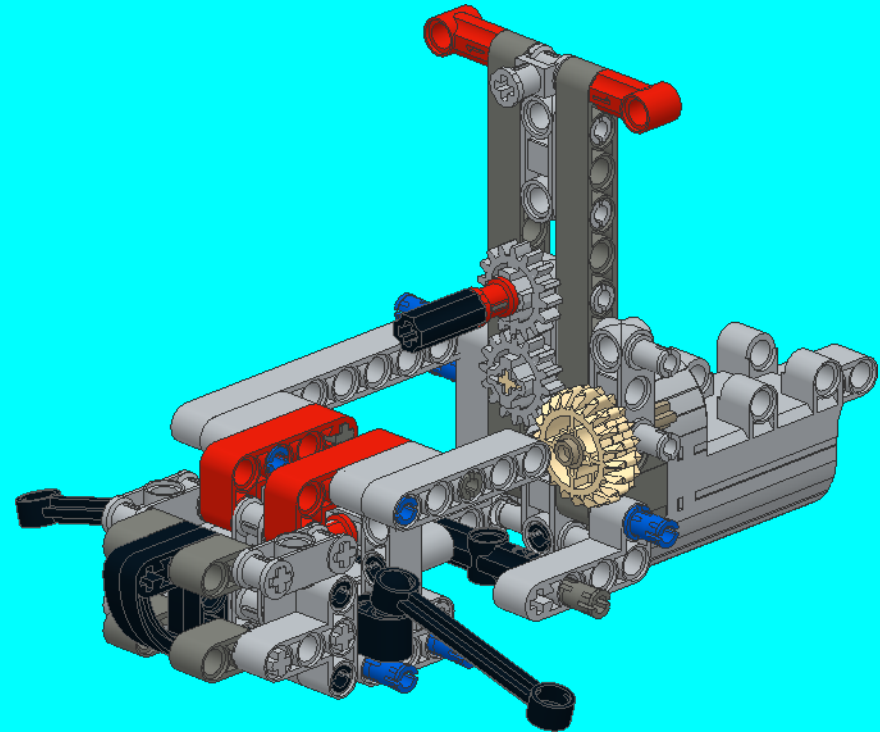
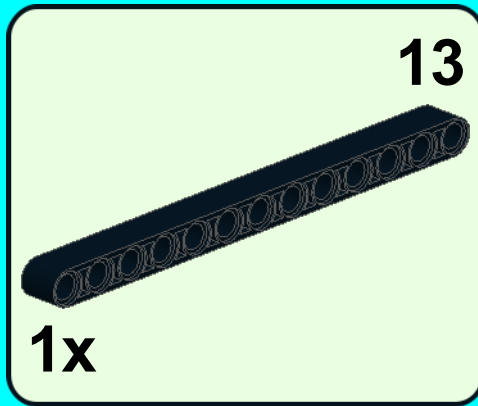
24



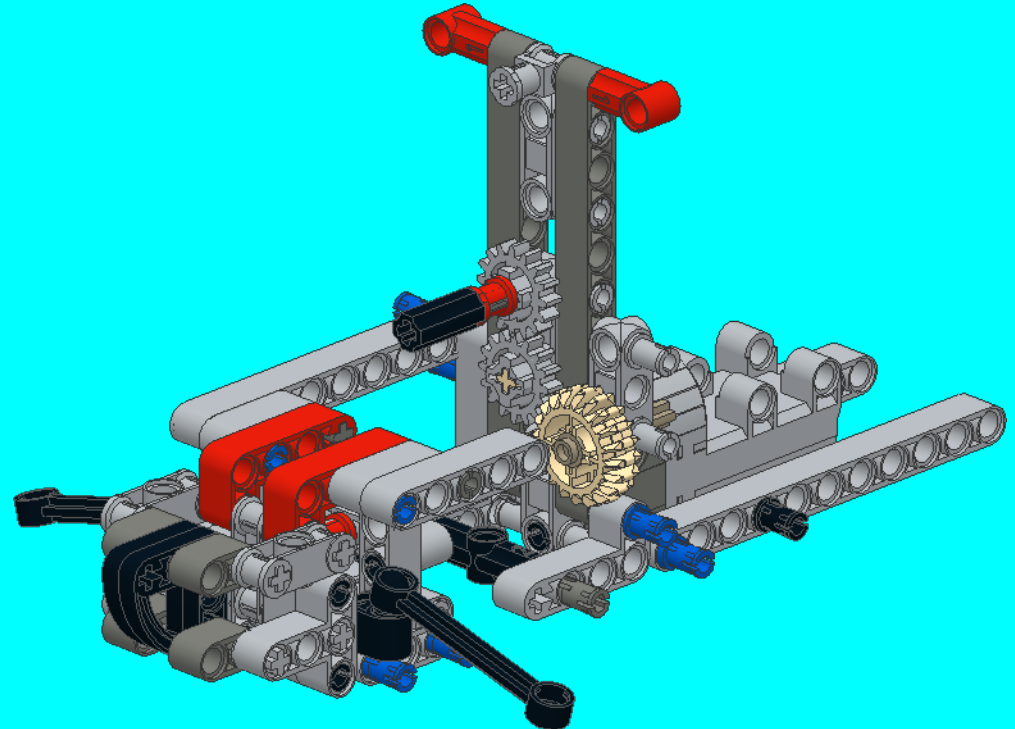
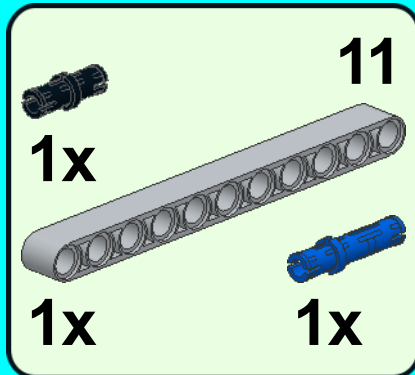
25



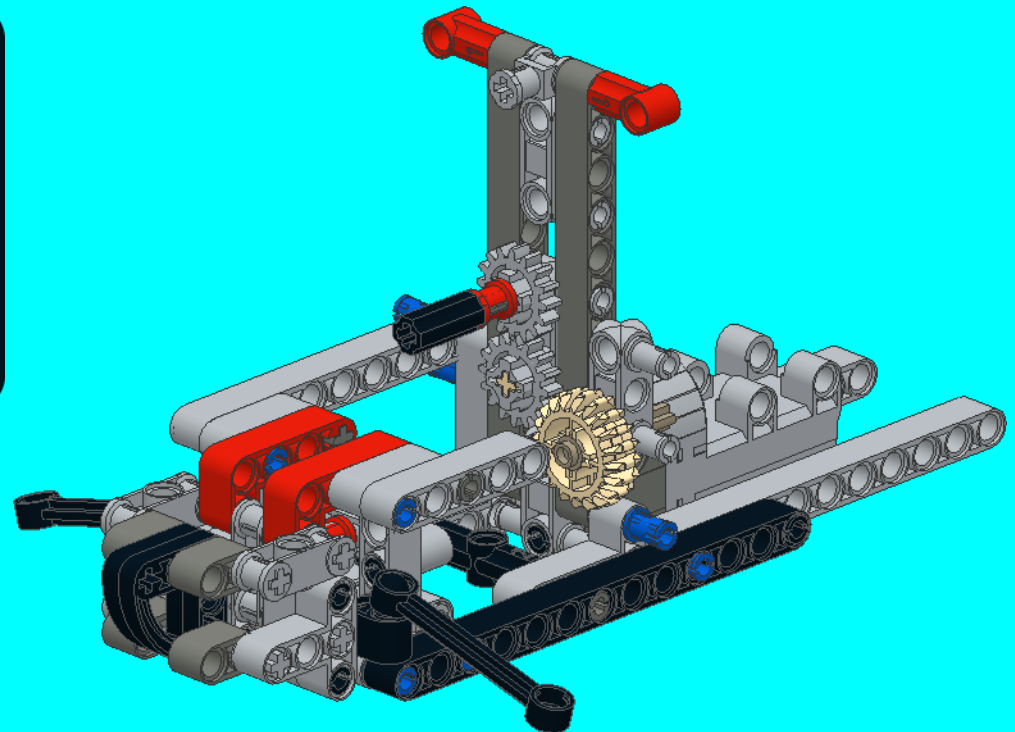
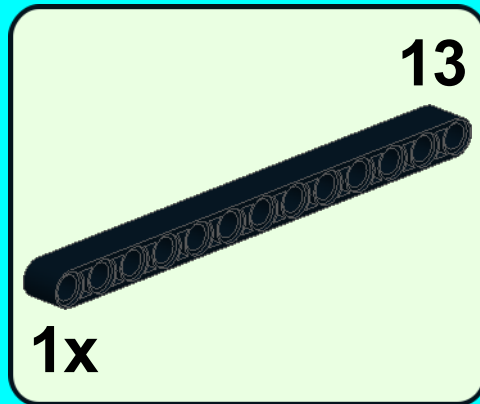
26



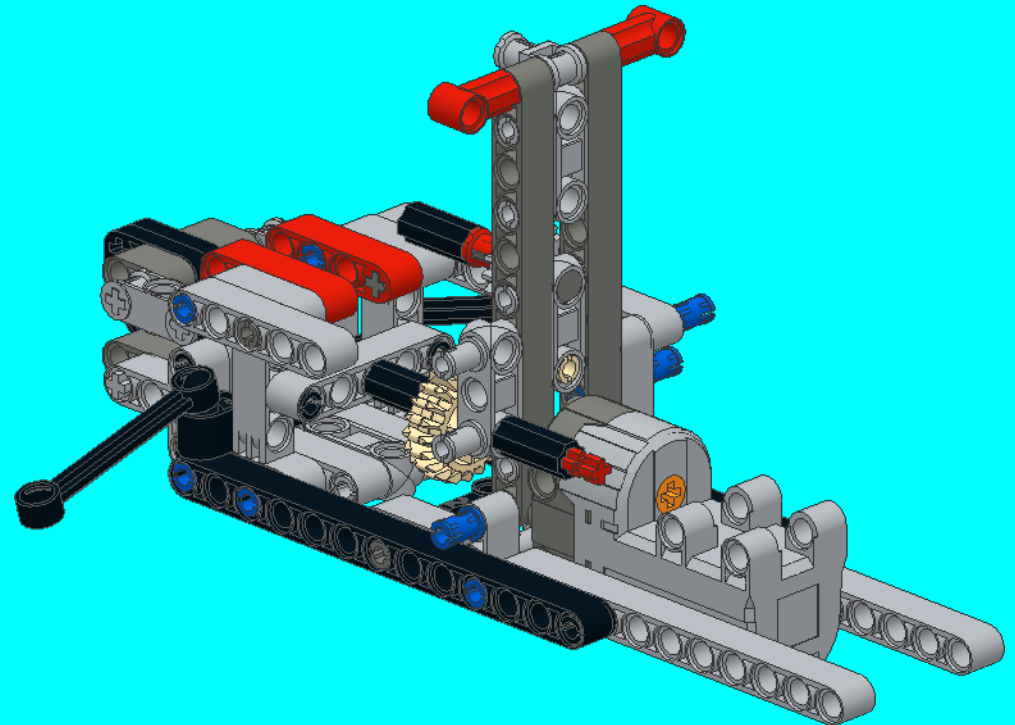
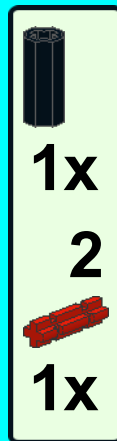
27



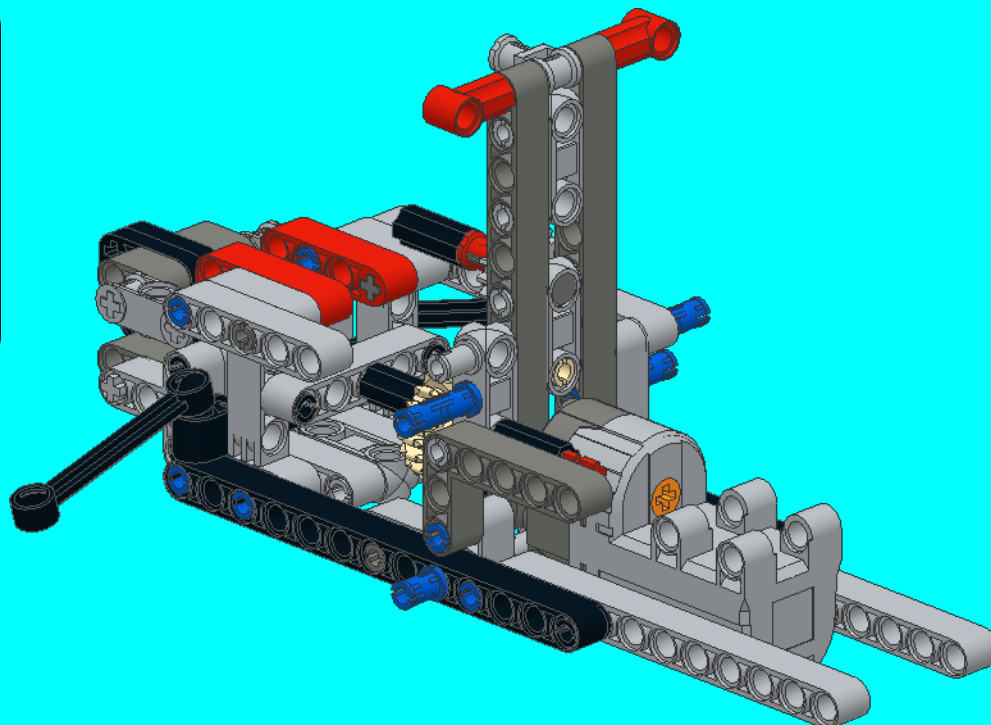
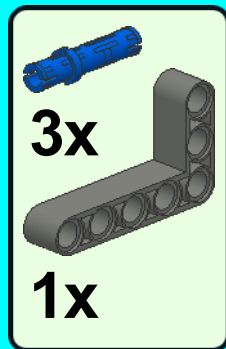
28



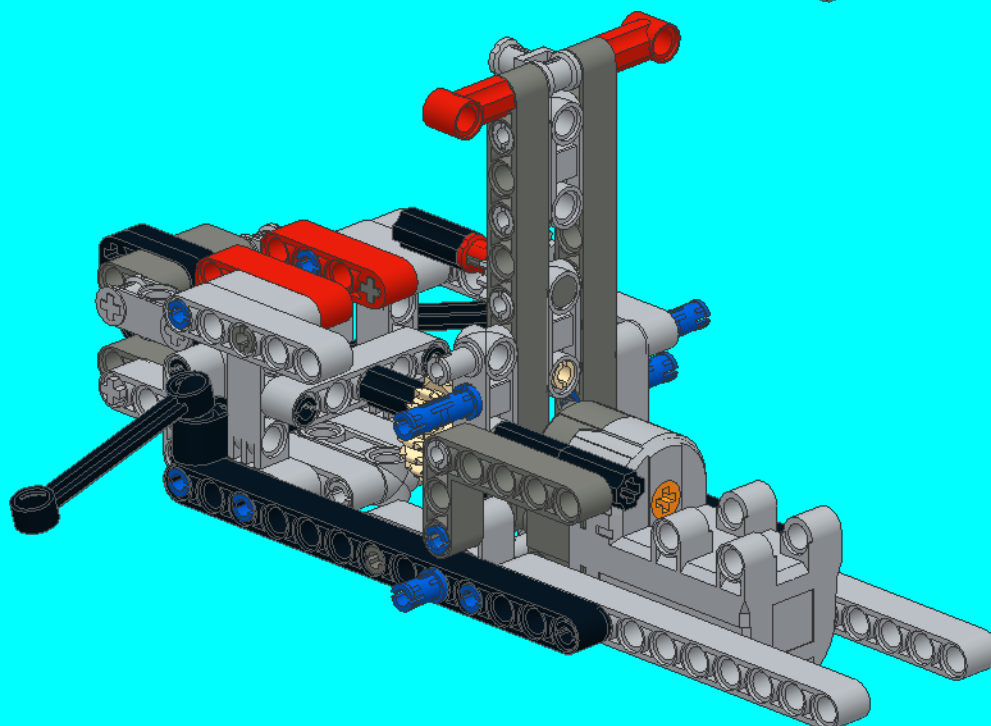
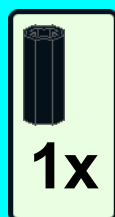
29



30



31



32



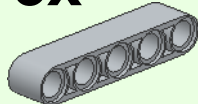
3x



1x 4



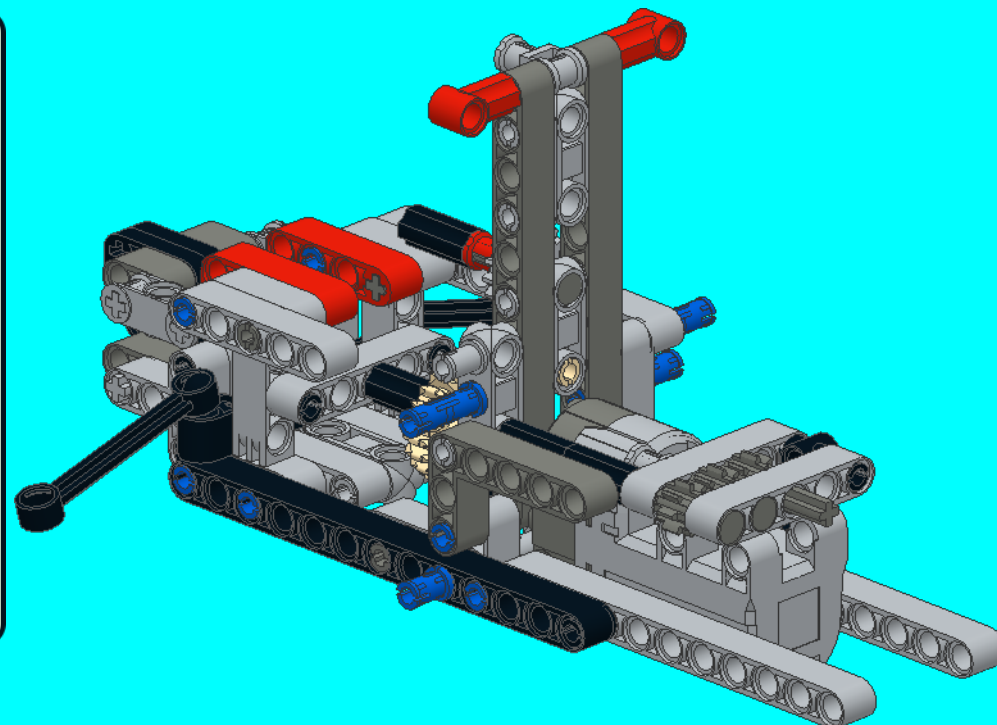
3x 5



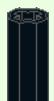
2x



1x



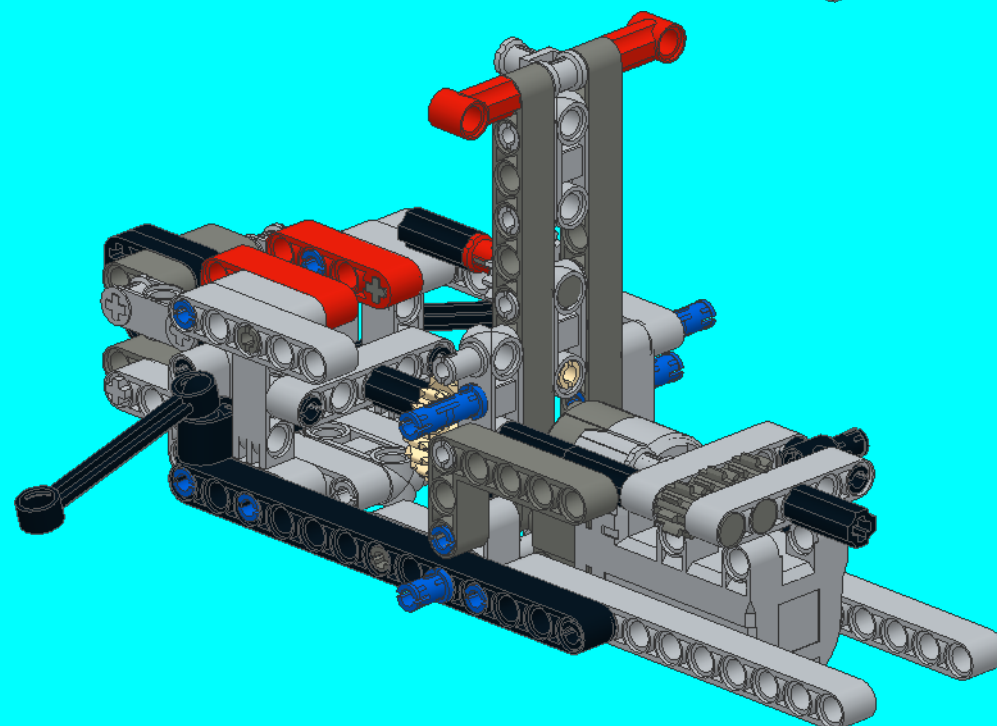
33



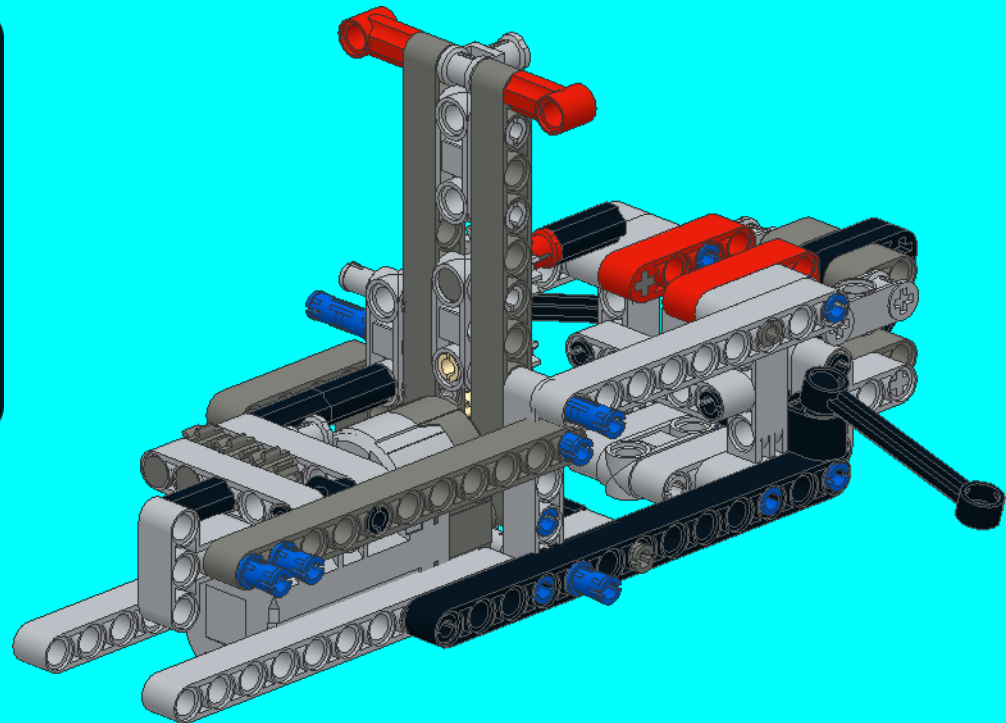
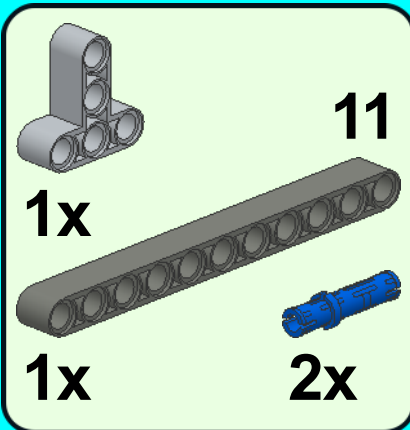
1x



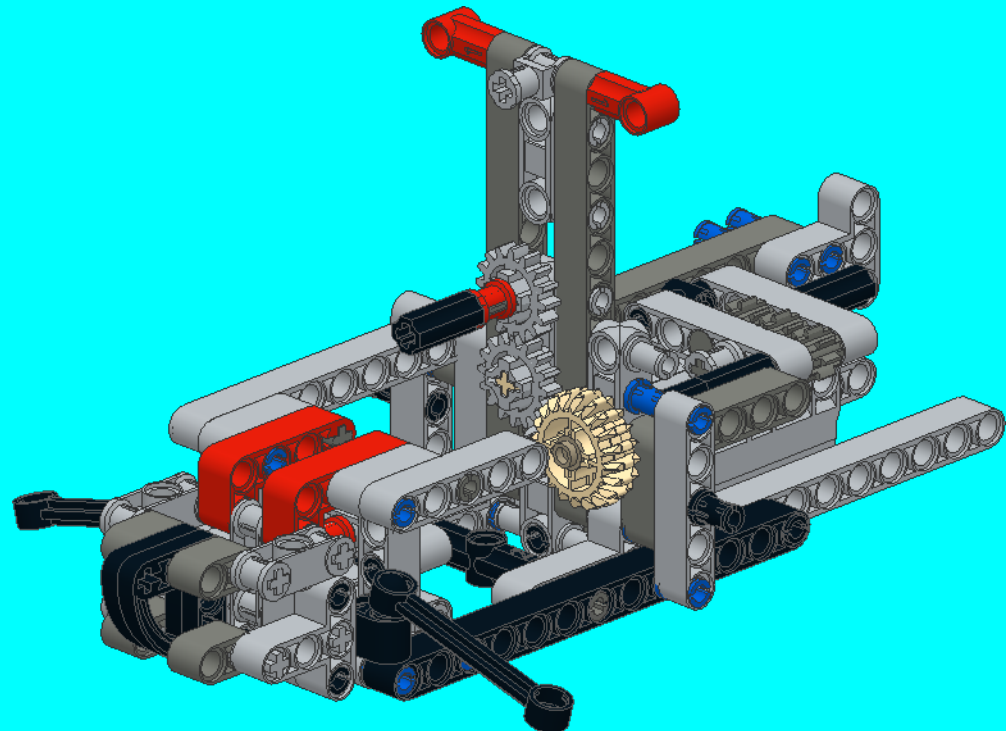
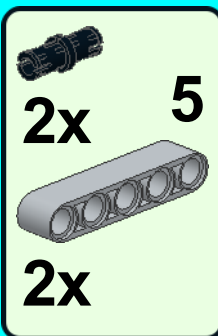
1x

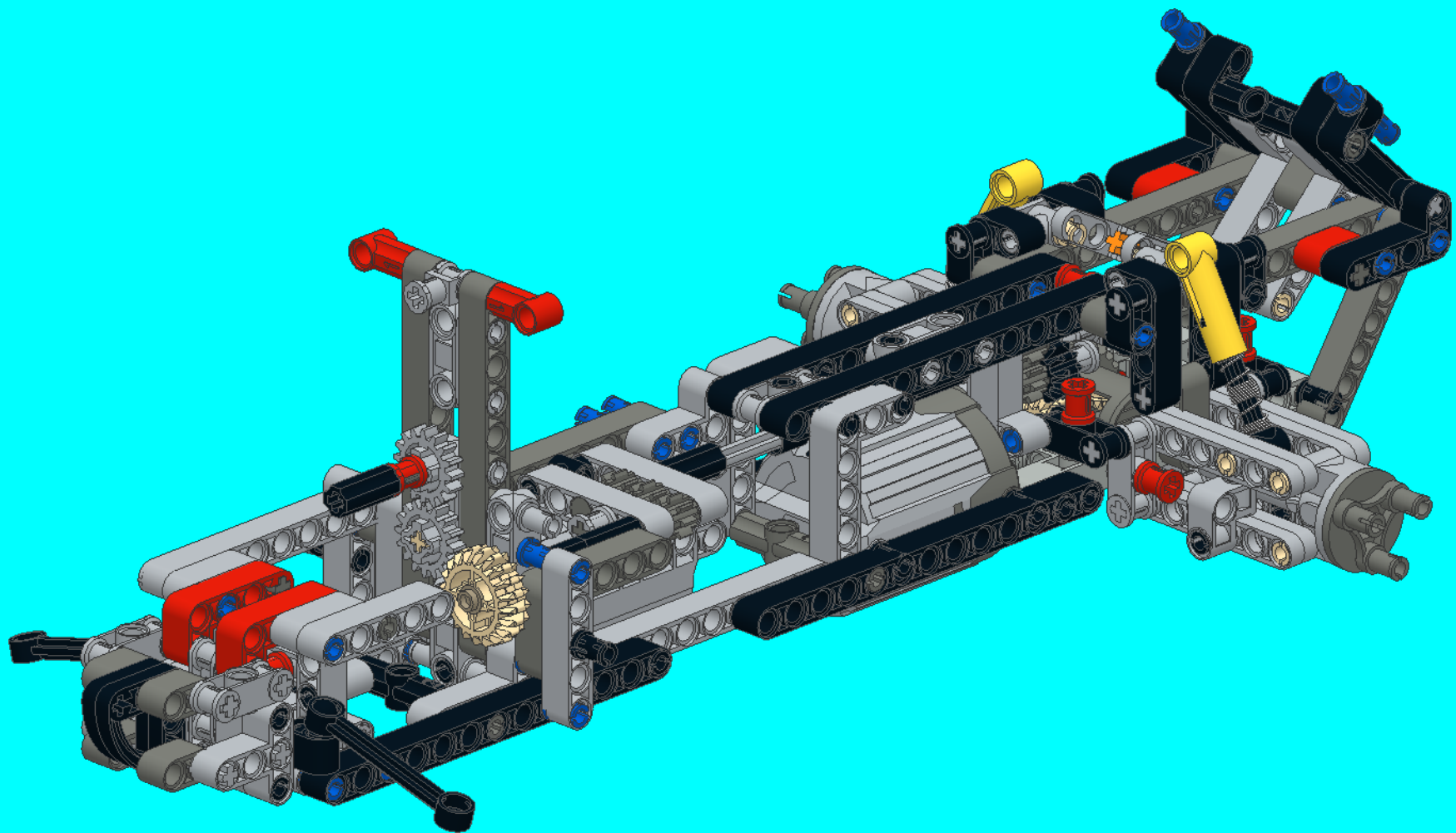


34

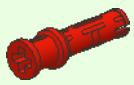


35

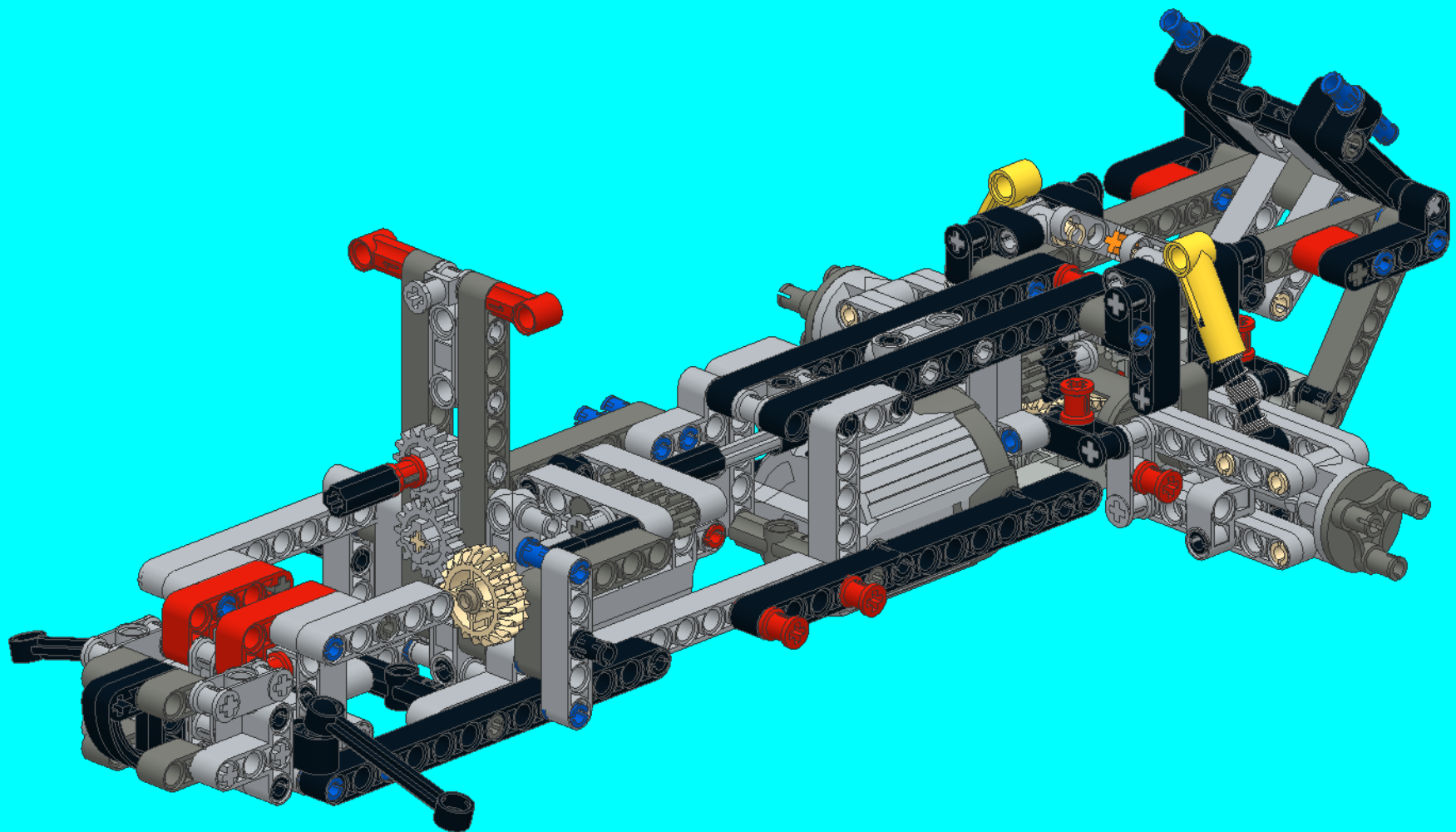




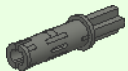
31



4x



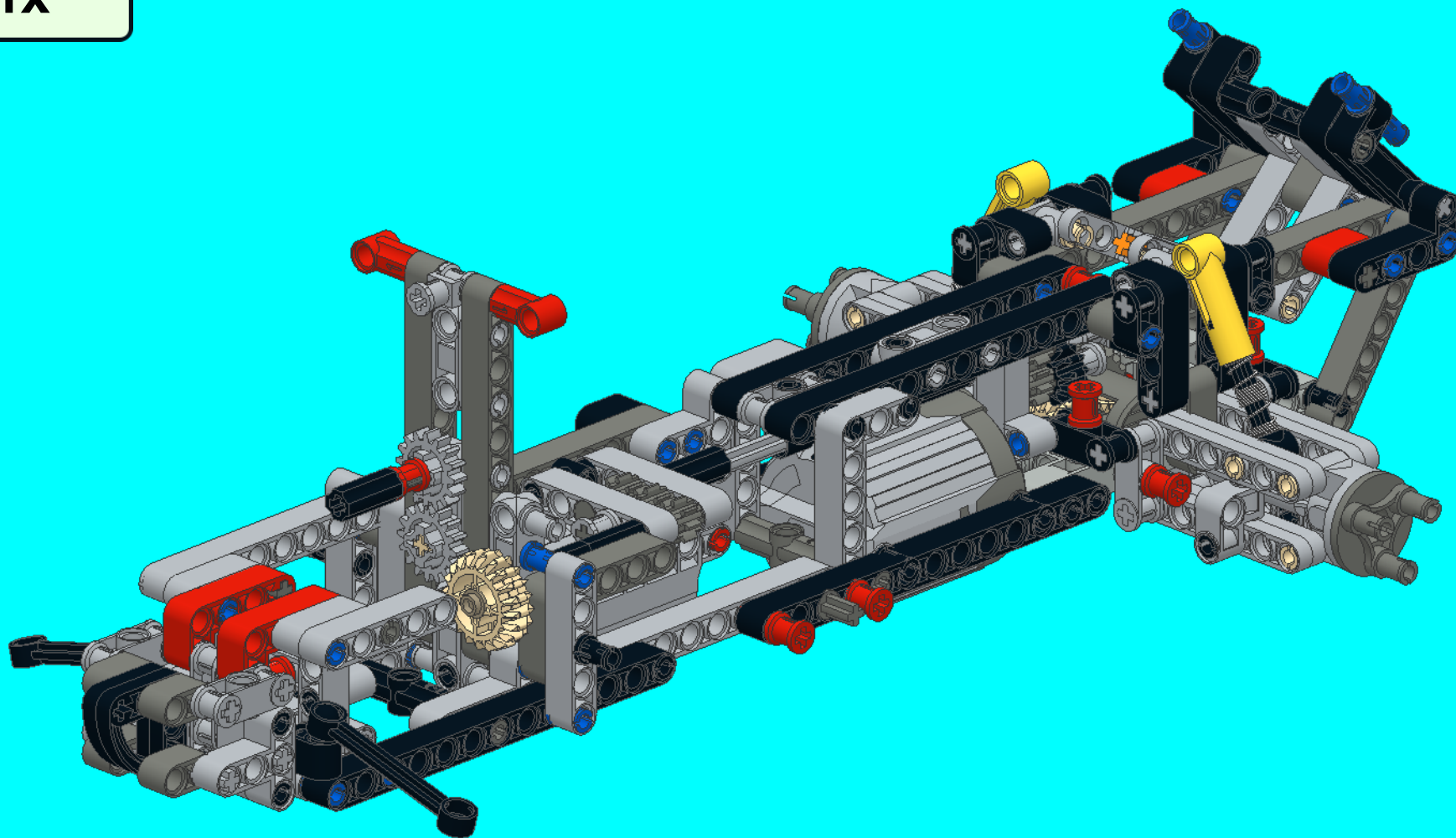
32



2x

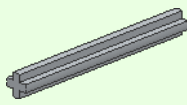


1x

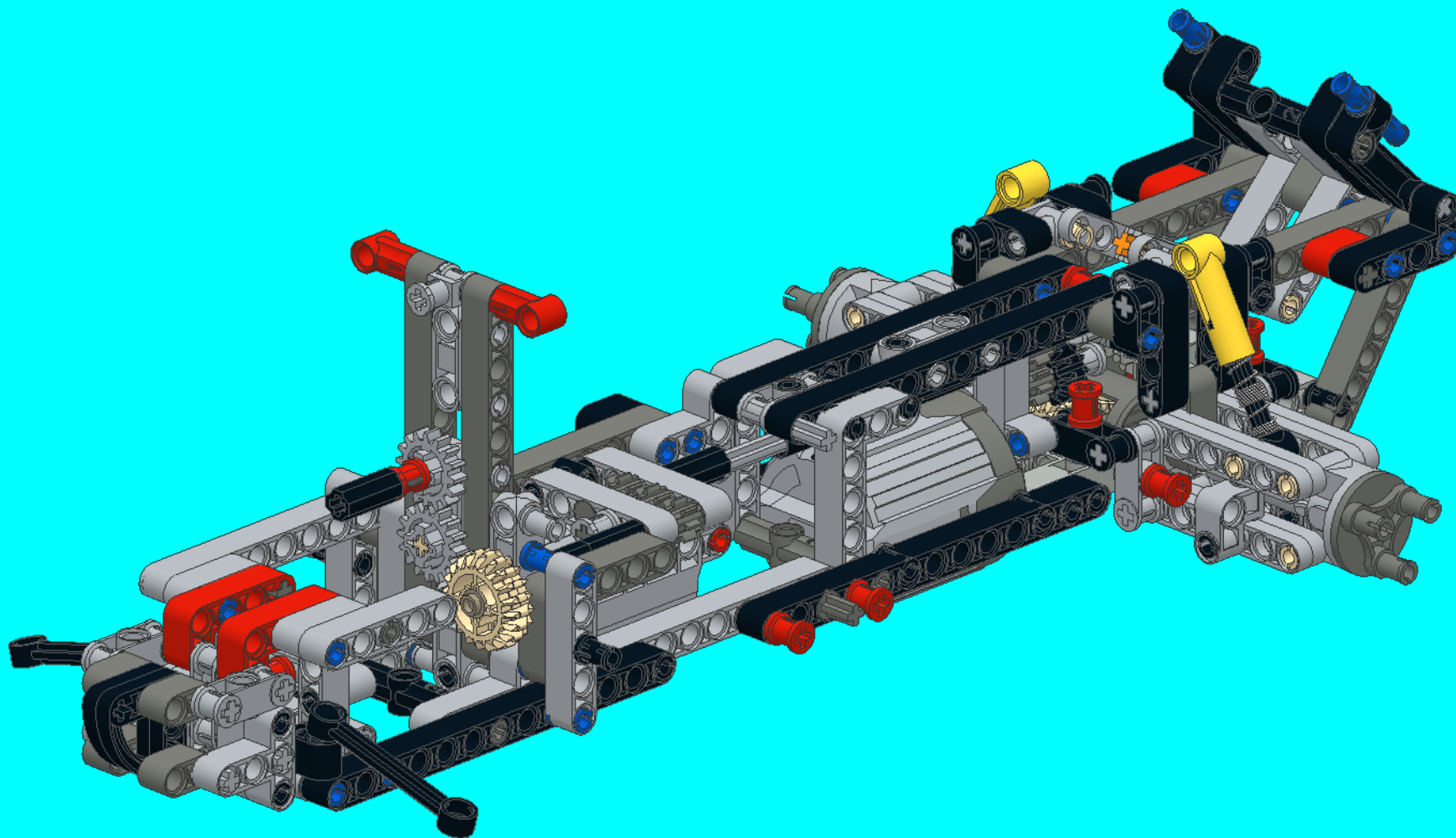


33

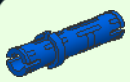
5



1x

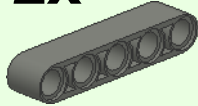


34

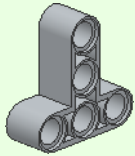


2x

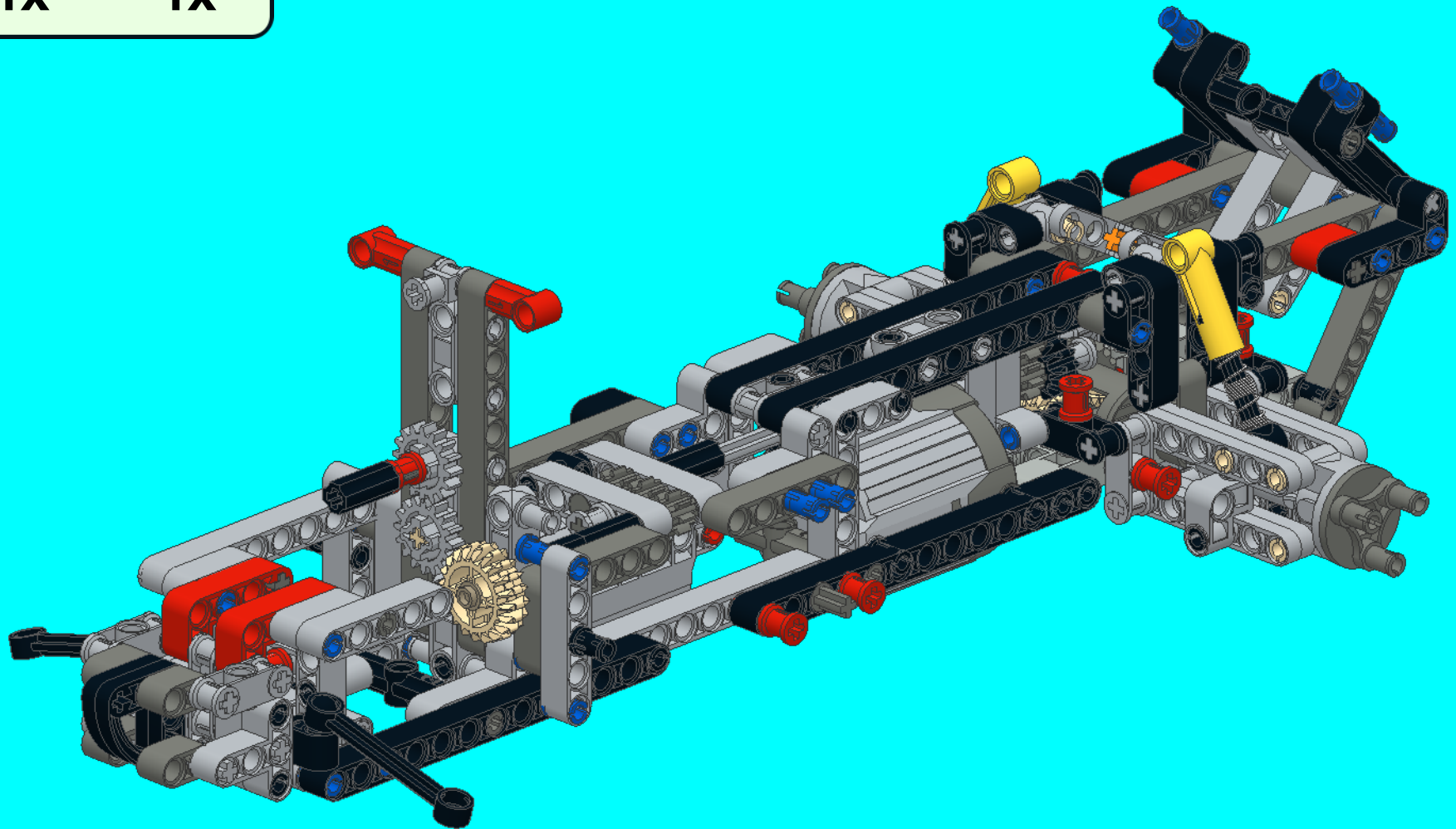
5



1x



1x



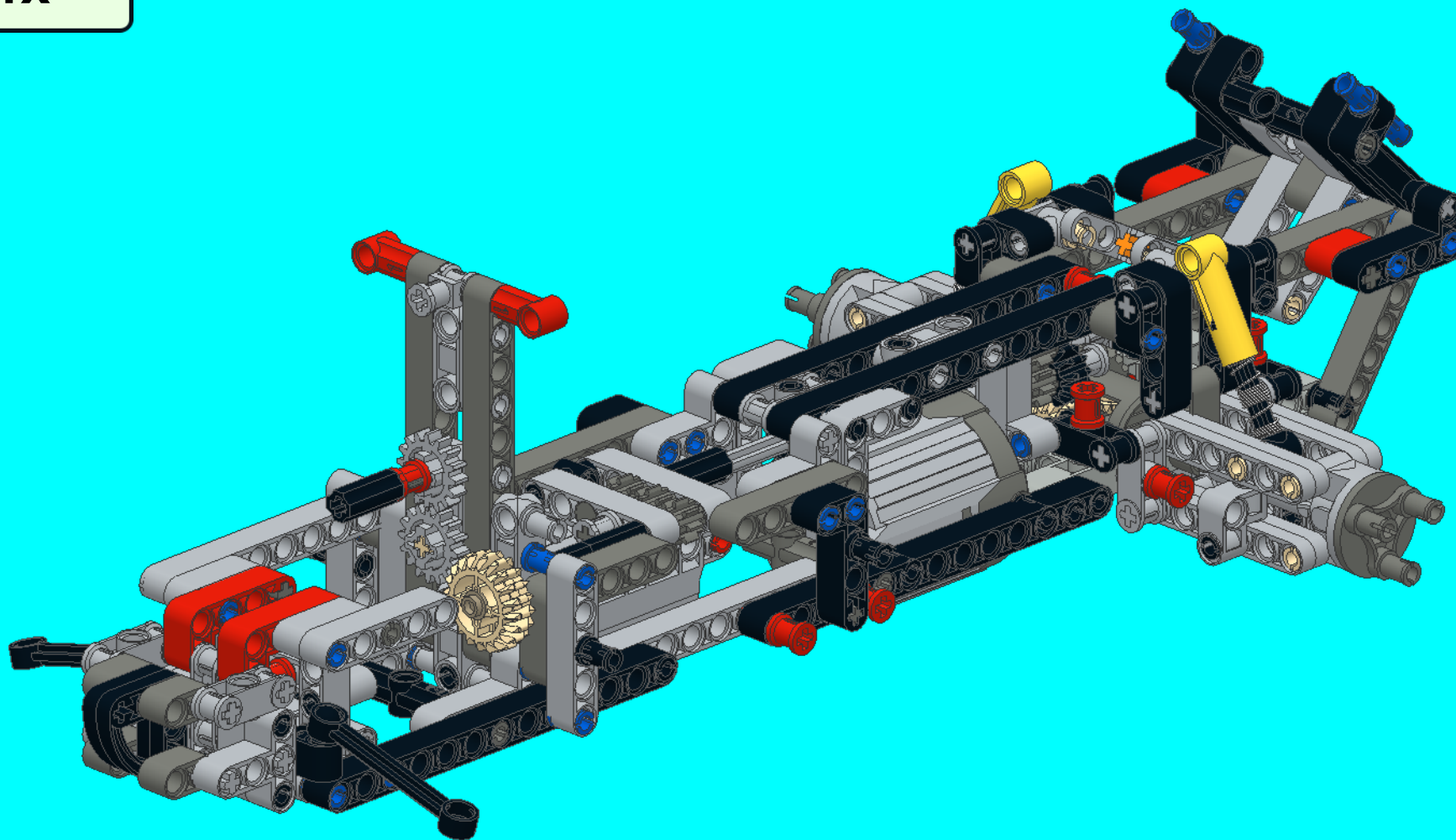
35



2x

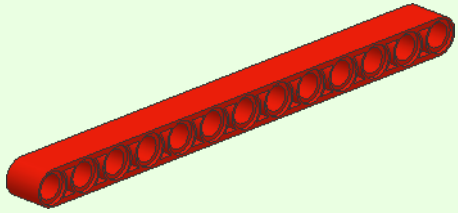


1x

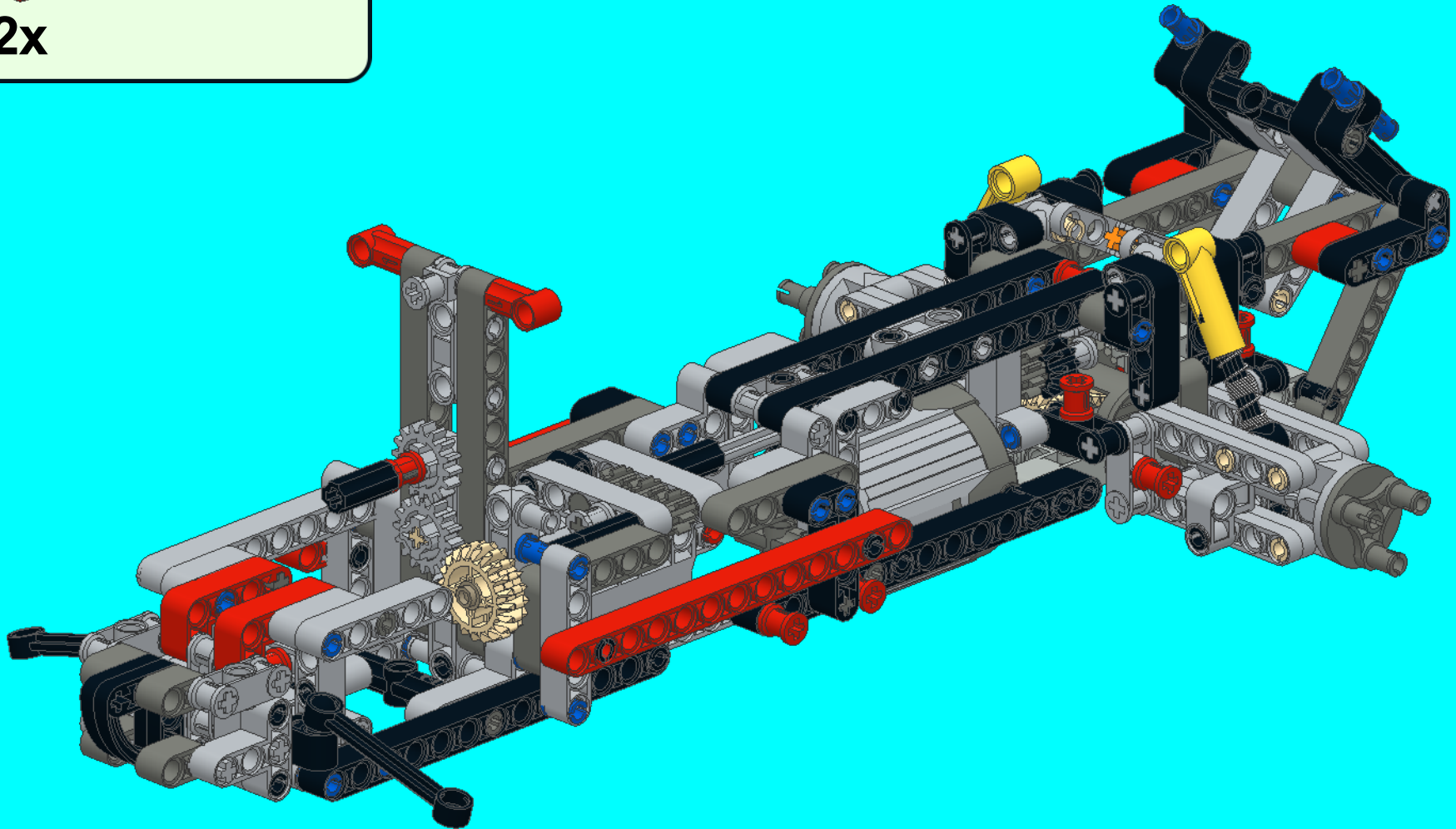


36

13

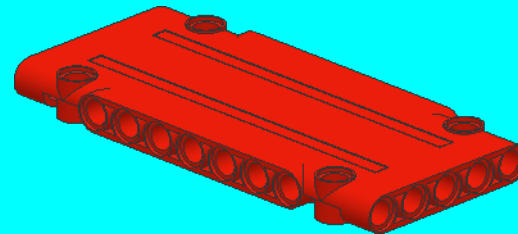
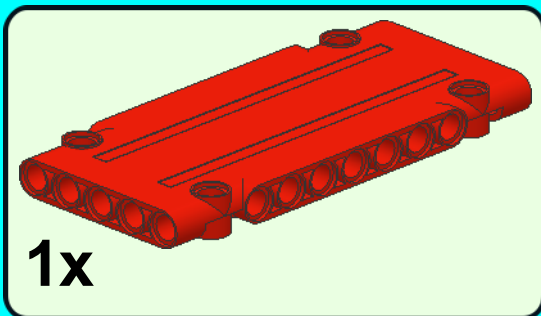


2x

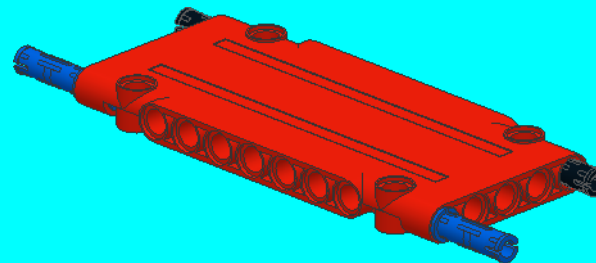
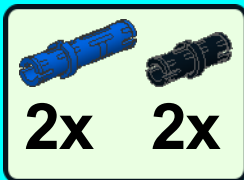


A this point, go back to the official instructions,
booklet 1, page 40 and start to build the cabin.
Once step 44 done, build the roof by following the upcoming
custom instructions

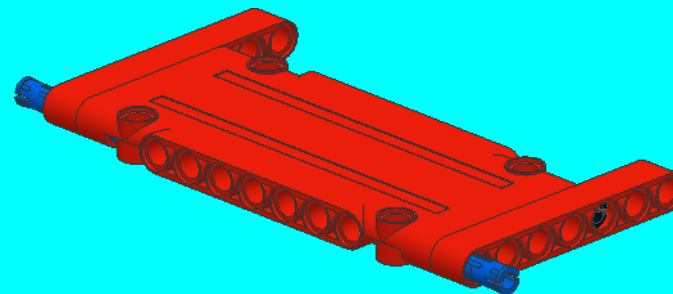
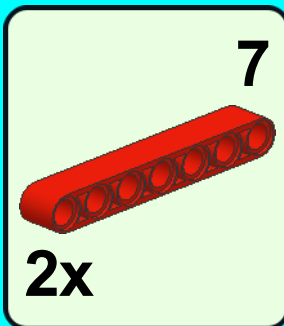
1



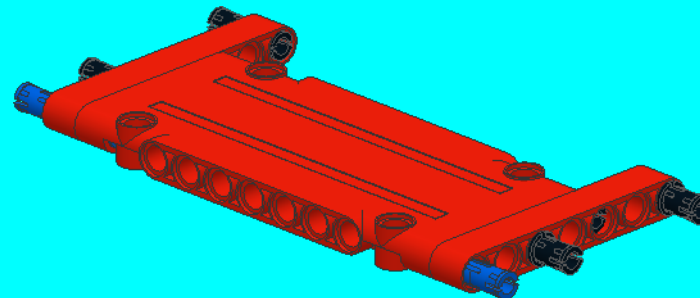
2

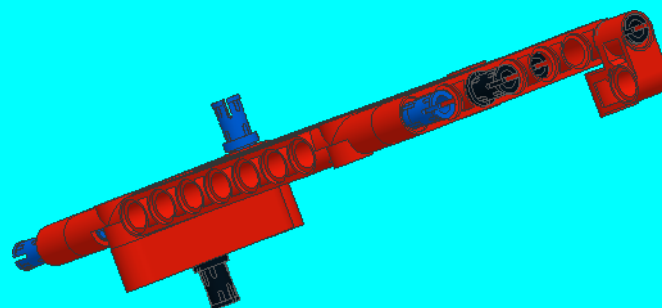
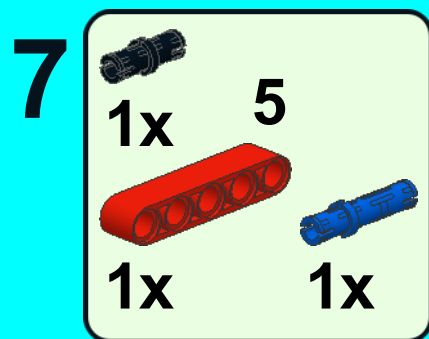
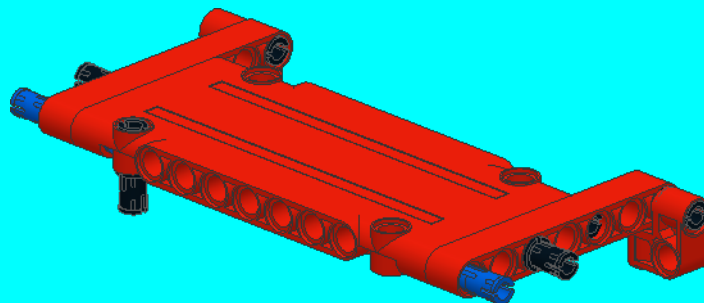
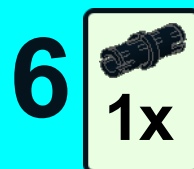
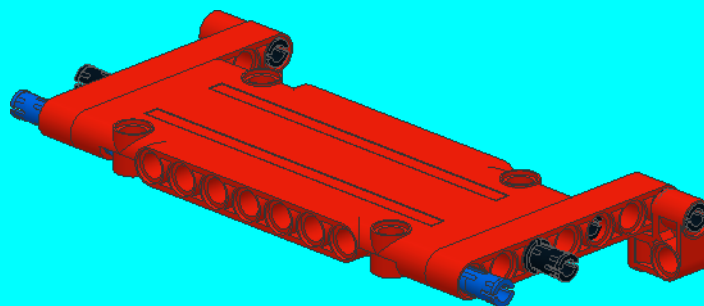
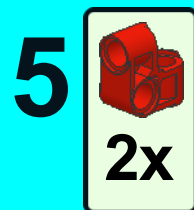


3

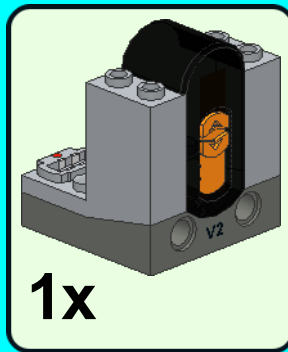


4

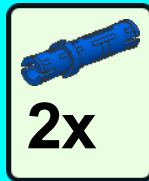




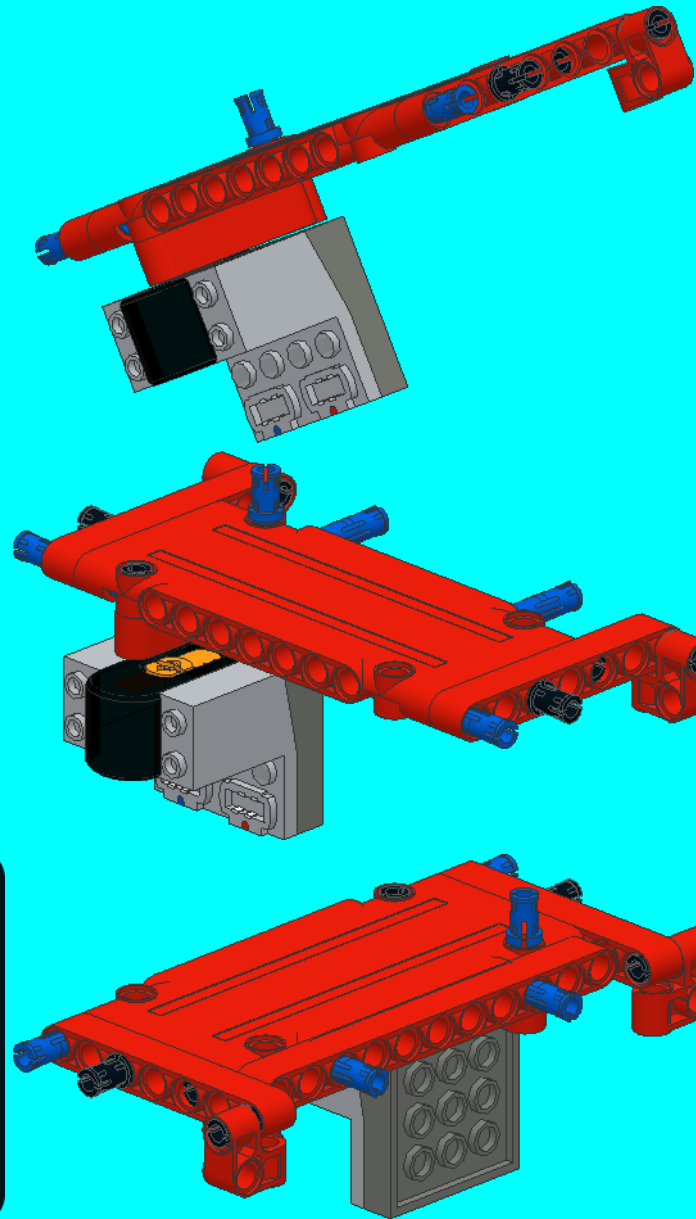
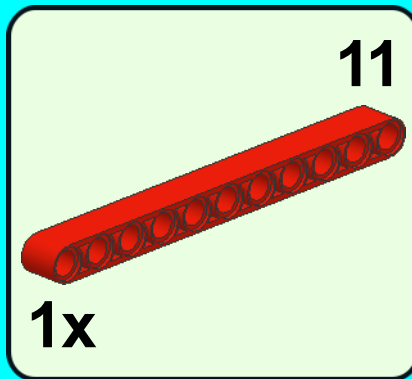
8



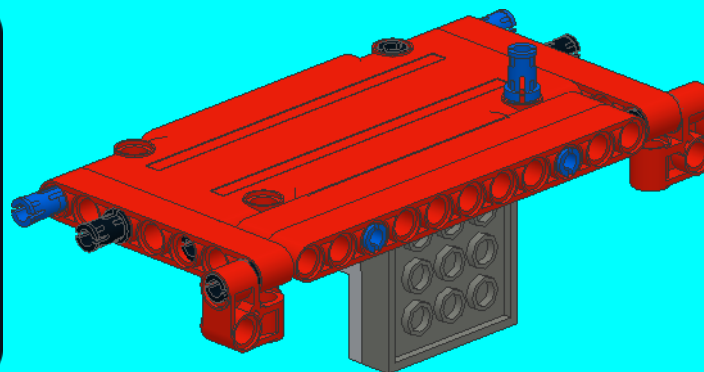
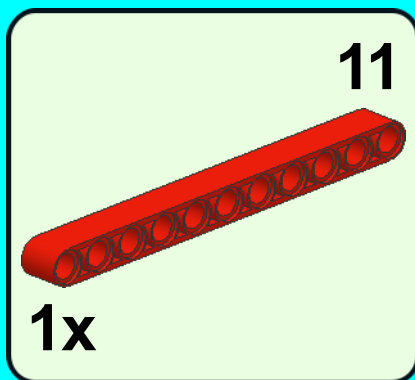
9



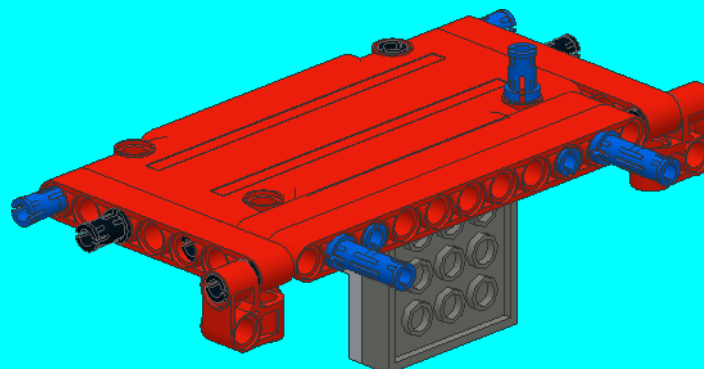
10



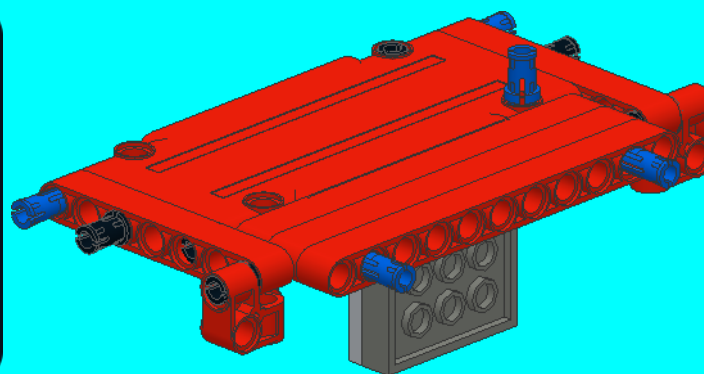
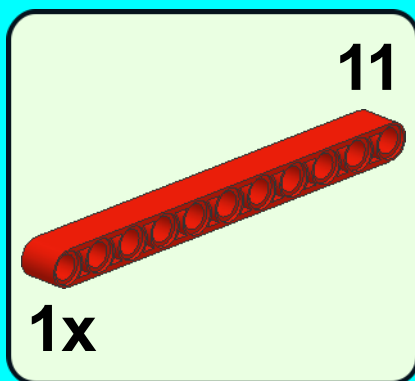
11



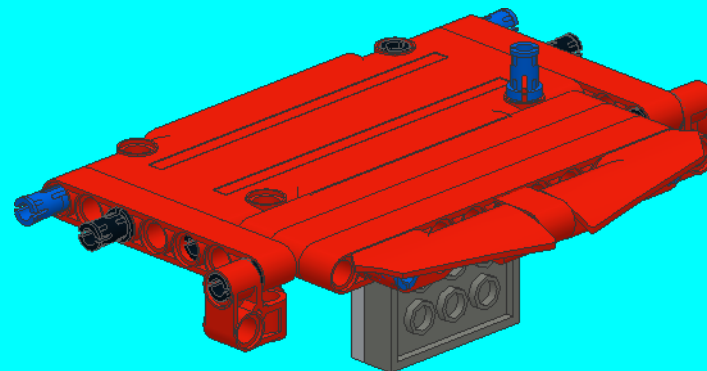
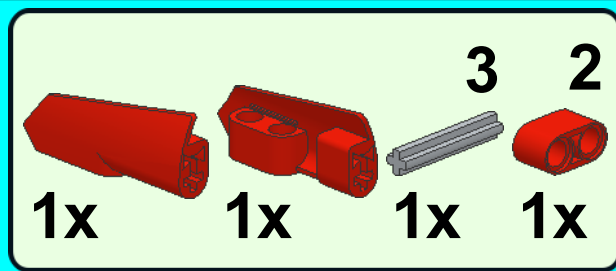
12



13



14



Go back to the official booklet 1 and finish to build your model.
Congratulations, you have now a remote controlled 42029 !



<http://lego.vilvert.fr>

If you like what you've built,
or just want to say thank you,
feel free to go back to my website, to register and post your comments !

Thank you for building this model

This is an original creation by Alexis Vilvert

<http://lego.vilvert.fr>

Those instructions are free of use and may not be sold or redistributed without authorization of their author.

Create new Lego Technic models and offer original instructions for free cost a lots of money. Any donations are welcome and will help for the upcoming models.

